



For Sale by Auction  
to be held at  
St Edmund's Court, Okehampton Street, Exeter  
01392 413100

**Tuesday 16<sup>th</sup> September 2014**

Jewellery  
Silver  
Ceramics  
Works of Art, Collectables and Pictures  
and  
Furniture

**SALE REFERENCE EX113**

Sale Commences at 10.00am

**Buyers are reminded to check the 'Saleroom Notice' for information regarding WITHDRAWN LOTS and EXTRA LOTS**

**On View:**

Saturday 13<sup>th</sup> September  
9.00am – 12noon

Monday 15<sup>th</sup> September  
9am – 7.00pm  
and morning of sale

**Order of Sale:**

Jewellery	Lots	1 – 162
Silver	Lots	180 - 292
Ceramics	Lots	330 - 383
Works of Art, Collectables Pictures, etc.	Lots	399 - 497
Furniture, Rugs	Lots	500 - 621

W: [www.bhandl.co.uk](http://www.bhandl.co.uk)

E: [enquiries@BHandL.co.uk](mailto:enquiries@BHandL.co.uk)

Follow us on Twitter: @BHandL

**Catalogue £1.50**



**Tuesday 16<sup>th</sup> September 2014**  
**Sale commences at 10am**

**JEWELLERY**

- 1 . A citrine coloured oval pendant with similar ring, two 9ct gold oval cameo brooches, together with various jewellery, watches and two circular photo frames.
- 2 . A silver cigarette case, a silver ingot pendant, together with a small quantity of silver and jewellery items .
- 3 . Various jewellery and costume jewellery including a gentleman's 'Seiko' wristwatch, an Art Nouveau style, enamelled brooch and a seed pearl brooch and amethyst brooch .
- 4 . An oval shell cameo portrait brooch, a jade bead single string necklace, a silver curb link watch chain and a quantity of jewellery and costume jewellery with various boxes.
- 5 . Various jewellery including a gold and diamond mounted single stone ring with cushion shaped, old brilliant-cut stone, together with two coral fragment necklaces and various brooches.
- 6 . A gold four-division puzzle ring, a 'sunstone' pendant, two rings and a twelve-division puzzle ring.
- 7 . A 'Belle Epoque' seed pearl and gem set pendant brooch, together with a 'Dolphin' brooch stamped 'Georg Jensen', together with a large collection of costume jewellery, buttons, brooches and watches, contained in two tool boxes.  
£100-£200.
- 8 . A quantity of jewellery and costume jewellery including a pair of peridot single stone ear studs, various cameo jewellery, miscellaneous watches and rings, contained in a brown suitcase.
- 9 . A 9ct gold slave bangle, a hinged bangle, various bar brooches, an 18ct gold and diamond three stone ring, together with a quantity of costume jewellery and coins.  
£300-£350.
- 10 . A diamond mounted five stone ring together with various simulated pearl necklaces, marcasite brooches and a cameo brooch.
- 11 . A quantity of costume jewellery including a lady's 'Rotary' wristwatch, a circular porcelain plaque brooch and simulated pearl necklaces .

- 12 . A pair of jade 'disc' earrings, a pair of circular jade earrings, together with a quantity of jewellery and costume jewellery in various boxes.
- 13 . A paste set 'cross' pendant in fitted case, together with a multi-gem set necklet, a wristwatch and various necklaces .
- 14 . 'Trifari'. A paste set, gold coloured costume necklace and bracelet stamped 'Trifari'.
- 15 . A gentleman's silver cased, keyless, open face pocket watch, the dial with Roman numerals and attached curb-link chain.
- 16 . A gentleman's gold plated half-hunter pocket watch.
- 17 . Thomas Clare. A George IV silver open face pocket watch, the circular white enamel dial signed 'Clare', the key wound fusee movement with repeat signature no 300 in a silver case with hallmarks for London 1823.
- 18 . A gentleman's silver-cased open face pocket watch , the dial with Roman numerals and subsidiary seconds dial.
- 19 . A gentleman's pair cased pocket watch, a 'Tempo' slim cased fob watch and a 'Waltham' open face pocket watch .
- 20 . An 18ct gold open face key wound fob watch of foliate design with attached oval link fob chain stamped '9ct'. £400-£450.
- 21 . A silver-cased, open face pocket watch , the dial with Roman numerals and subsidiary seconds dial, together with fob chain and keys.
- 22 . An 18ct. gold cased, open face 'Waltham' pocket watch, the white enamel dial with Roman numerals and subsidiary seconds dial. £600-£800.
- 23 . A lady's 18ct gold fob watch, the foliate dial with Roman numerals with attached 9ct gold chain . £300-£400.
- 24 . An 18ct gold half hunter pocket watch , the white enamel dial with Roman numerals and subsidiary seconds dial, the reverse with monogrammed inscribed. £350-£450.
- 25 . A gentleman's 9ct gold open face pocket watch , the white enamel dial with Arabic numerals and subsidiary seconds dial with 9ct gold fob chain and attached hard stone swivel seal. £300-£400.
- 26 . An 18ct gold open face pocket watch with attached chain, key, photograph locket and sovereign dated '1913' . £700-£900.
- 27 . A gentleman's silver cased, open face pocket watch, together with attached vesta case and silver Albert chain .
- 28-30. No Lots.

- 31 . A lady's 9ct gold 'Roamer' wristwatch , the circular dial with Arabic numerals and subsidiary seconds dial, on expanding bracelet.
- 32 . Dreyfuss & Co. A gentleman's 'Dreyfuss & Co' wristwatch , the large, circular dial with baton markers and subsidiary seconds dial, together with an international guarantee leaflet and certificate stating watch number '4890' and series number '1946', together with large, fitted case. £100-£200.
- 33 . Raymond Weil. A gentleman's 'Raymond Weil Geneve' stainless steel, two tone wristwatch , the dial with Roman numerals and subsidiary seconds dial, in case with guarantee certificates. £80-£120.
- 34 . Raymond Weil. A gentleman's 'Raymond Weil Geneve' Swiss Made wristwatch , the rectangular dial with Roman numerals and baton markers, the reverse stamped '18K gold electroplated', together with certificate of guarantee.
- 35 . Omega. A gentleman's gold plated 'Omega' wristwatch , the dial with baton markers and date aperture, on black leather strap.
- 36 . A gentleman's 'Accurist alarm', stainless steel wristwatch with green bezel and a gentleman's 'Accurist Quartz' wristwatch .
- 37 . A lady's gold and rose diamond mounted wristwatch, the dial with Arabic numerals, on black material strap, 10gms gross weight.
- 38 . A lady's 9ct gold wristwatch , the circular dial with Arabic numerals, on expanding bracelet . £100-£150.
- 39 . Omega. A gentleman's 'Omega Automatic Seamaster Calendar' wristwatch , the dial with baton markers and Arabic numerals, also date aperture, on leather strap.
- 40 . A lady's 'Omega' wristwatch , the circular dial with baton markers, on mesh link strap, approximately 25 gms gross weight. £100-£200.
- 41 . A lady's cocktail wristwatch , the rectangular dial with Arabic numerals mille-grain set with circular, single-cut diamonds, on expanding strap.
- 42 . Omega . A lady's gold 'Omega' wristwatch, the rectangular dial with triangular markers, on gold mesh link strap. £400-£600.
- 43 . A lady's 'Valex' wristwatch , the circular dial on a 9ct gold bracelet.
- 44 . An enamelled gold wristwatch the circular dial with Roman numerals, the case reverse decorated in enamel depicting a young girl wearing a blue dress.

- 45 . A 9ct gold 'Amateur Swimming Association' medal dated '1907', together with a 9ct gold curb link bracelet, a 9ct gold padlock clasp, and a seed pearl set bar brooch . £200-£250.
- 46 . Two 9ct gold bracelets, 55gms gross weight. £480-£520.
- 47 . A 9ct gold, hollow curb-link bracelet, a lady's gold wrist watch, Victorian pendant medallion, gold horseshoe stick pin, silver monogram brooch and an Art Deco paste set collar .
- 48 . A United States of America ten dollar coin dated '1909', a Victorian sovereign dated '1855' and a half sovereign . £550-£650.
- 49 . A fob watch stamped '18K', an oval shell cameo brooch, together with various gold and gold coloured jewellery including rings, chains and earrings. £500-£600.
- 50 . An Albert chain stamped '15' .
- 51 . A 9ct gold graduated curb-link Albert chain with attached hard stone swivel seal and T-bar. £250-£300.
- 52 . A pair of 18ct gold engine-turned oval panel cuff-links, a pair of 9ct gold cuff-links, a pair of black enamelled and mother of pearl cuff-links, a pair of dress studs and a bar brooch . £250-£300.
- 53 . A gentleman's 9ct gold seal ring with bloodstone arms intaglio.
- 54 . A 9ct gold circular link fob chain . £150-£200.
- 55 . A pair of 9ct gold engine turned oval panel cuff-links and a pair of studs in a case.
- 56 . A pair of 9ct gold engine-turned oval cuff-links, two 18ct gold studs and a gold plated stud in a case .
- 57 . A pair of 18ct gold oval panel cuff-links and a similar pair of cuff-links, 13gms gross weight. £180-£220.
- 58 . Three gold dress studs and a small group of various cuff-links and dress studs .
- 59 . A cultured pearl spray brooch stamped '14K'. £80-£120.
- 60 . A 9ct gold oval locket on gilt metal chain, a 9ct gold oval panel ring, a 15ct gold ring, a gentleman's signet ring, a three stone ring and a pair of oval cuff-links . £180-£200.
- 61 . A 9ct gold curb link bracelet with nineteen various attached charms including 'gnome' and 'trophy' charm. £300-£350.
- 62 . A 9ct gold and amethyst mounted bracelet together with matching ring and a pair of earrings .
- 63 . A 9ct gold three tone 'butterfly' necklace, together with a suite of 9ct gold and diamond set jewellery comprising a necklace, ring and a pair of earrings.

- 64 . Three sovereigns, two 1/2 sovereigns and an 18ct gold sovereign case, together with a pair of dress studs .  
£900-£1200.
- 65 . A pair of 18ct gold sporting cuff-links in the form of a 'snaffle bit', together with a pair of 9ct gold oval panel cuff-links ,a curb link chain and various dress studs .  
£400-£500.
- 66 . A Victorian sovereign dated '1881', mounted as a pendant on 9ct gold chain.  
£180-£220.
- 67 . A diamond pendant on chain, the circular cut diamond estimated to weight a total of 0.45cts, together with a heart motif bar brooch, a seal and a sapphire and diamond seven stone necklet .  
£300-£400.
- 68 . A 9ct gold bracelet of open work design with safety chain and pointed padlock clasp.  
£180-£220.
- 69 . A diamond set two panel bar brooch, another bar brooch, a pair of 9ct gold square panel cuff-links and various fine link chains .  
£150-£200.
- 70 . A 9ct gold curb link fob chain with attached gem stone swivel seal .  
£200-£300.
- 71 . Two pairs of 9ct gold panel cuff-links, various studs, a 'Longines' wristwatch and a lady's wristwatch on expanding bracelet.  
£200-£300.
- 72 . A 9ct gold and gem set oval pendant brooch with pear shaped drop.
- 73 . A 9ct gold and white gem-set bracelet of curb-linking with rectangular gem-set panels, two 9ct gold and diamond mounted square cluster rings in 'Rolex' design and two puzzle rings .  
£500-£700.
- 74 . No Lot.
- 75 . A graduated amber bead single string necklace with beads of varying shapes , approximately 110gms gross weight.  
£120-£180.
- 76 . A pair of coral drop earrings, a pair of cuff-links, a gem set brooch and a small group of various jewellery .
- 77 . A lady's rectangular 'Roamer' travelling watch with attached key chain.
- 78 . A Victorian garnet and seed pearl brooch , the octagonal garnet within open scroll work design and four surrounding seed pearls, the reverse with glazed compartment.
- 79 . An Egyptian style 'Moses in the basket' locket, two chains, a bar brooch and an opal ring.
- 80 . A pair of red spinel and rose diamond earrings .
- 81 . A carved mother of pearl cameo mounted bracelet, a similar necklace, together with three pairs of earrings, two single earrings, a loose amethyst and a beetle pendant .

- 82 . An Art Nouveau enamel pendant stamped 'S & E', a single stone pendant and a cultured pearl necklace .
- 83 . A collection of crystalline silver specimens , approximately 31gms gross weight.
- 84 . A 19th century carved ivory oval brooch depicting three figures, within gold frame.
- 85 . A 9ct gold and single oval aquamarine bar brooch and an orange paste-set 'silver' bar brooch .
- 86 . A Swiss silver and green enamelled travelling watch, approximately 36mm diameter, approximately 62gms gross weight.
- 87 . A 9ct gold propelling pencil and a 9ct gold fountain pen .
- 88 . An amethyst and cultured pearl bar brooch and a turquoise and seed pearl bar brooch .
- 89 . A small quantity of costume jewellery to include a 'snake' bangle on necklace, a lady's 'Quartz' wristwatch, a gem set pendant on chain and a cultured pearl, single string necklace .
- 90 . A white metal life-saving medal inscribed 'C.J. Collings' and a similar bronze coloured medal, together with various coins, a fountain pen and a calculator.
- 91 . A silver paste set necklace of open work design.
- 92 . A 'Charles Horner' gem set hair slide, an amethyst necklace, a silver ring and an oval, amethyst clasp .
- 93 . A 9ct gold mounted amber cigar holder , approximately 6.9gms gross weight.
- 94 . A filled gold 'owl' propelling pencil .
- 95 . A gold and coral pendant of open work design, suspending three coral drops.
- 96 . A cameo mounted stick pin, a gem set 'bee' stick pin, together with a collection of 14 various pins and brooches, in case.
- 97 . An oval shell cameo, pear shaped topaz drop, an amethyst pendant, a nephrite jade pendant and a small group of various items .
- 98 . A pair of cased black onyx and white enamel dress studs.
- 99 . Three paste set buckles, a mounted otter foot and a paper knife .
- 100 . Two oval locket portrait pendants, two brooches with encased locks of hair, a turquoise bar brooch and other small items .
- 101 . A group of gilt metal jewellery, together with a 'cross' pendant, a silver thimble and various seals .
- 102 . A suite of jade and 9ct gold mounted jewellery comprising a bracelet, a pair of earrings, a pendant on chain and a ring.
- 103 . An opal mounted bracelet of open work design with padlock clasp stamped '9ct'. £100-£150.

- 104 . A silver coloured chain mail and multi gem set necklace, possibly by Alison Evans , the rope of chain mail suspending amethysts, citrines, moonstones, freshwater pearls and other gem beads, 145gms gross weight.  
£200-£300.
- 105 . A reverse painted, moulded glass mounted tie clip with 'Terrier' motif.
- 106 . A peridot and seed pearl bar brooch, the circular peridot within a surround of seed pearls, stamped '15ct'.
- 107 . An 'RAF' blue, green and red enamelled bar brooch, together with two various pins.
- 108 . A 9ct gold sapphire and seed pearl heart shaped pendant, a sapphire and diamond seven stone ring and a pasted set brooch .
- 109 . A portrait miniature of a young man within a circular frame, mounted as a pendant, three loose cameos and a portrait brooch .
- 110 . A blue and white paste-set cushion shaped ring, together with an oval cameo portrait brooch depicting a woman, stamped '9C'.
- 111 . A sapphire and diamond mounted cluster ring with central oval sapphire between triple clusters of circular brilliant-cut diamonds, the shank stamped '585'.
- 112 . A synthetic alexandrite single stone ring, an amethyst and a diamond oval cluster ring, together with fourteen various gold and gem set rings .  
£250-£350.
- 113 . A late 19th century, 18ct gold and diamond single stone ring, claw set with round old brilliant-cut stone approximately 0.45cts.  
£200-£300.
- 114 . A diamond single stone ring the circular, brilliant-cut diamond estimated to weigh a total of 0.40cts, the shank stamped '18ct' and 'PLAT', in rex claw setting.  
£350-£450.
- 115 . An 18ct gold and diamond half eternity ring, mille-grain set with circular, brilliant-cut diamonds and a sapphire and diamond half eternity ring .  
£300-£400.
- 116 . A diamond five-stone ring with graduated round old brilliant-cut stones estimated to weigh at total of 0.85cts and a similar sapphire half-hoop ring.  
£250-£300.
- 117 . A diamond mounted single-stone ring with round old brilliant-cut stone approximately 1.3cts and three gem-set rings.  
£400-£500.
- 118 . An Austro-Hungarian silver and gem-set necklace and a pink paste-set necklace .



- 119 . An arts and crafts enamelled silver and mother of pearl pendant on chain and a similar pendant.
- 120 . A gold and opal five-stone ring with graduated oval opals in claw setting with diamond points and a ruby and diamond mounted ring £150-£250.
- 121 . A pair of green and white paste-set drop earrings, a double swallow and heart motif brooch and a coral stick pin .
- 122 . An 18ct gold, ruby and diamond circular cluster ring, a seven-stone ring and four gold and gem-set rings . £400-£500.
- 123 . An 18ct gold and diamond mounted five-stone ring with graduated round old brilliant-cut stones. £150-£200.
- 124 . A gold, ruby and diamond three-stone ring with single oval ruby between round old brilliant-cut diamonds.
- 125 . An emerald single stone ring, the pear-shaped emerald in rex claw setting, the shank stamped '18ct'.
- 126 . A sapphire and diamond circular cluster ring with central, circular diamond within a surround of oval cut sapphires. £300-£350.
- 127 . A garnet and diamond ring with two pear shaped cabochon garnets separated by a row of rose cut diamonds.
- 128 . A synthetic ruby single stone ring, the shank with floral design. £150-£200.
- 129 . A gentleman's gold and diamond mounted oval cluster ring, pave set with circular, brilliant-cut diamonds. £400-£500.
- 130 . An 18ct gold and diamond half eternity ring pave set with circular, brilliant-cut diamonds. £200-£250.
- 131 . An 18ct white gold princess-cut diamond four stone ring . £120-£180.
- 132 . A coral mounted single stone ring, an amethyst square single stone ring, together with five various gem set rings. £150-£200.
- 133 . An opal and garnet five stone ring .
- 134 . An 18ct gold, ruby and diamond square cluster ring, together with a diamond and paste set rectangular cluster ring . £150-£200.
- 135 . A Victorian sovereign dated '1891', mounted as a ring in 9ct gold setting. £200-£250.
- 136 . A Victorian gold, emerald and seed pearl circular cluster ring, an opal five stone ring and an emerald five stone ring . £100-£200.

- 137 . A 9ct gold three colour ring of leaf design, a gentleman's 9ct gold square panel ring and four other various rings .  
£150-£200.
- 138 . A half sovereign dated '2002', within gem set pendant mount, together with eight gold and gem set dress rings, three pairs of gold earrings and a green gem set pendant.  
£300-£350.
- 139 . A circular photograph locket on graduated curb link chain stamped '15'.  
£250-£350.
- 140 . An 18ct gold and diamond five stone ring with graduated, old brilliant-cut diamonds in cut down collet setting.  
£180-£220.
- 141 . An 18ct gold and chrysoprase mounted single stone ring the shank with foliate design.  
£150-£200.
- 142 . An 18ct gold, sapphire and diamond seven stone ring with graduated, oval cut sapphires.
- 143 . An 18ct gold and diamond three stone cross-over ring with circular, brilliant-cut diamonds.
- 144 . A gentleman's 9ct gold signet ring, a 9ct gold paste set eternity ring and a 9ct gold, yellow gem set single stone ring .
- 145 . An 18ct gold and diamond five stone ring, a 9ct gold half eternity ring and a diamond set single stone ring .  
£250-£300.
- 146 . Two 22ct gold bands .
- 147 . A red coral high relief portrait cameo, mounted as a ring on 9ct gold shank.  
£100-£150.
- 148 . An 18ct gold, rectangular emerald and diamond cluster ring with central 'emerald-cut' emerald between diamond shoulders, 5.6gms gross weight.  
£150-£250.
- 149 . An 18ct gold, rectangular garnet and diamond ring with central garnet claw-set between trefoil clusters of diamond shoulders, 5.9gms gross weight.  
£150-£250.
- 150 . An 18ct gold, rectangular sapphire and diamond ring with central 'emerald-cut' sapphire between diamond shoulders, 6.9gms gross weight.  
£200-£300.
- 151 . A Middle Eastern gold, emerald and diamond cluster ring , 5.3gms gross weight.  
£100-£200.
- 152 . A 'United Kingdom Gold Proof Three Coin Sovereign Set' dated '1995', in fitted case, a similar three coin set dated '1999', a 'United Kingdom Gold Proof Crown' dated '1997' in fitted case, two-coin sets in fitted case, five sovereigns, four half sovereigns and a one tenth Britannia . (21)  
£3000-£3200.
- 153 . A 'Fortnum & Mason' travelling clock, a 'Solo' clock, a gentleman's 'Vertex' pocket watch, together with various jewellery, watches and other items .

- 154 . A diamond single stone ring, a blue and white cushion shaped cluster ring, a wedding band, together with four various gem set rings .
- 155 . Various jewellery and silver jewellery including a 9ct gold gate-link bracelet, a heart shaped locket on chain, two bar brooches, a moonstone brooch and a diamond set crucifix pendant .  
£150-£250.
- 156 . An 18ct gold and diamond set heart shaped locket, a blue gem set lavalier, an enamelled and seed pearl bar brooch, a paste set 'sweetheart' double heart brooch and a mother of pearl pocket knife in fitted case .  
£150-£200.
- 157 . A cultured pearl, coral and diamond set necklace .
- 158 . A quantity of various jewellery including a Victorian pietra dura panel, oval brooch, an oval cameo brooch and paste set jewellery .
- 159 . A turquoise and diamond set brooch suspending graduated turquoise and rose diamond drops.  
£80-£120.
- 160 . A collection of various lady's and gentleman's wristwatches including 'Rotary' and 'Accurist' .
- 161 . A collection of Scottish jewellery and military badges, six items in total.
- 162 . A diamond single-single-stone ring with round old brilliant-cut stone approximately 1.5cts between diamond-set shoulders.  
£400-£600.

163-179. No Lots.

**SHEFFIELD, ELECTROPLATE AND SILVER**  
**(All items silver unless otherwise stated)**

- 180 . An Art Deco four piece plated tea and coffee service with ebonised finials and handles.
- 181 . Three silver mounted glass dressing table bottles, a silver mounted heart shaped dressing table box, a rectangular example, a silver capstan inkwell and a silver mounted perfume bottle, (7) 1.93oz weighable silver.  
£100-£150.
- 182 . A silver sauceboat, Birmingham 1910, a cased pair of silver napkin rings, Chester 1899 a pair of 925 barrel condiments, two silver napkin rings, an ashtray, two tea spoons together with a comb and a brush mount , 12.91oz  
£100-£120.
- 183 . An elongated silver octagonal snuff box, maker 'HM', Birmingham 1899 , with landscape garden scene to lid within a reeded border, 9cm long, 1.78oz.
- 184 . A silver sauceboat, with reeded rim and shell knee tripod feet, Sheffield 1946, 4oz.
- 185 . A pair of Victorian silver Apostle spoons, makers James Aldwinckle & Thomas Slater, London 1892 4.45oz cased.  
£70-£90.

Please note most silver weights are in imperial ozs and not troy ozs.

















- 339 . A Pilkington bottle vase, together with an Austrian green glass vase, glass bottle inkwell and a green vase.
- 340 . A Nailsea glass flask, the clear body with red and white combed trails, 20cm long.
- 341 . An oak and plate mounted tantalus , containing three clear glass decanters and stoppers, 35cm wide.
- 342 . Five pieces of Herend porcelain , including a three division sweet meat dish and two pails.  
£80-£120.
- 343 . Two Walton style figures -St Mark and St Luke , each 19cm high, some damage.
- 344 . A glass feeding flask , etched with two donkeys and a mare, and two rummers.
- 345 . A quantity of chemist's bottles various colours each with gilt and other captions. (15)
- 346 . A suite of cut wine glasses, tumblers and sherry glasses, etc.
- 347 . A William Ridgeway meat plate in the Sylvan pattern, a similar pair and a Bohemian coffee service.
- 348 . A Spode part coffee service , together with Royal Albert tea cups and miscellaneous teawares.
- 349 . A suite of cut glass wine glasses , brandy goblets and sherry glasses  
£100-£150.
- 350 . A suite of graduated cut glass wine glasses .
- 351 . A collection of assorted glassware.
- 352 . A collection of Port Merion pottery , including storage jars, baking dishes and pie dishes.  
£80-£120.
- 353 . Three Chinese blue and white vases , together with a quantity of miscellaneous ceramics.
- 354 . A collection of Royal Worcester Evesham and Evesham Vale tableware.  
£100-£150.
- 355 . A Border Fine Arts model of Lipton's tea trolley bus , mounted on a polished wood base, 42cm wide.  
£80-£120.
- 356 . A Royal Worcester porcelain model of a tree creeper , mounted on a polished wood base, 22cm high.  
£80-£120.
- 357 . A Beswick basset hound mounted on a polished wood base, 20cm wide.
- 358 . T Galli - Capodimonte figure seated trumpet player , 17cm high.
- 359 . A pair of French pottery figures , of a girl feeding rabbits, and a lad feeding kittens, impressed marks to the base, each, 30cm high  
£100-£150.
- 360 . Six pedestal dessert dishes , two four section decanters, two silver mounted vases, etc.

- 361 . A group of six Quimper pottery plates together with two other Quimper plates, Quimper jugs, a copper lustre jug and a vase.
- 362 . A Chinese blue and white decorated porcelain vase , 19cm wide, late 19th century, together with other various rice bowls, etc.
- 363 . A pair of Cantonese export porcelain vases , decorated with figures in an interior, 23cm high, on polished wood stands, together with an Imari porcelain jar and cover and other Chinese ceramics.
- 364 . A large collection of assorted glassware , including green glass decanters and stoppers, pot glasses, spill vases, etc.
- 365 . A large collection of assorted ceramics , including Japanese teawares continental figures, biscuit jar, teawares, etc.
- 366 . A collection of part tea services , including lustre tea service, lustre tea service, blue and white serving dishes, etc.
- 367 . A mixed quantity of glass and ceramics , including a Doulton part tea and dinner service, glass salad bowls, vases, etc.
- 368 . A Royal Worcester Rhapsody pattern part dinner service , approx. one hundred pieces. £200-£300.
- 369 . J. Martel, Paris, a frosted glass paperweight in the form of a ram, diamond point etched J. Martel, Paris, France, 13 cm long. £100-£150.
- 370 . A stoneware model of a seated ape on a hollow mound base, under oatmeal glazes, indistinctly inscribed verso, together with a novelty table bell.
- 371 . A group of cut glassware including two vases, decanter, three jugs, two jars and two bowls, plus two Hummel figures.
- 372 . Miscellaneous ceramics and glass including an opaline glass table centre vase and a pair of Imari plates .
- 373 . A cranberry overlaid and gilt bon bon dish , together with a set of ten cranberry drinking glasses.
- 374 . An early 19th century English porcelain mug with floral decoration, together with a Royal Worcester cream jug.
- 375 . A Keith Murray for Wedgwood annular vase of squat globular form, the ivory body moulded with horizontal ribs, facsimile signature in green and printed Wedgwood England, 16 cm high, 1935-50. £120-£180.
- 376 . A Japanese Satsuma moon flask vase .
- 377 . E. Barker - A Royal Worcester squat vase decorated with sheep. £100-£150.
- 378 . A small mixed collection of miscellaneous ceramics .
- 379 . A large quantity of Royal Albert Old Country Roses tableware . £100-£200.

- 380 . A pair of Staffordshire pottery seated King Charles spaniels with flower holders .
- 381 . Three Royal Worcester figures of birds .
- 382 . A collection of various glassware , including dressing table, candlesticks, cream jugs, etc.
- 383 . A Chinese porcelain bowl with flared rim and cylindrical footrim, the exterior painted with lotus, prunus and other blooms on a white sgraffito ground, the interior with greenish/turquoise glaze, apocryphal underglaze blue Jiaqing seal mark, 20.5cm diameter.  
£200-£300.
- 384-398. No Lots.

**WORKS OF ART AND  
COLLECTABLES INCLUDING  
PICTURES**

- 399 . A Bell telephone and another .
- 400 . A 19th century carved sycamore bread board with near matching knife , together with an Edwardian table top spice chest.
- 401 . A Liberty & Co pewter and enamel bedside timepiece , together with a Chinese silver ingot a silver and enamelled Felix the cat menu holder and various other collectables.
- 402 . Two amber nuggets with polished surfaces , together with a specimen hardstone sphere and a snow-flake obsidian specimen.
- 403 . A cast brass walking stick handle in the form of a bloodhound and a silver plated parasol in the form of a hunting dog.
- 404 . Two boxes of various books to include 1920's advertising books , etc.
- 405 . A group of copper and brassware .
- 406 . A quantity of books, The works of Thackery, Scott, Dickens, Stephenson .
- 407 . WOODHOUSE, L.G.O - The Butterfly Fauna of Ceylon, Illustrated, cloth, 1950; The Art-Journal Illustrated Catalogue of the Great Exhibition 1851; together with a quantity of other volumes.
- 408 . KIPLING, Rudyard - The Seven Seas, 4th edition 1898, Barrack-Room Ballads, 14th edition 1898, hf. mor., 8vo. With...Sixty Poems, cloth, dustwrapper, 1939 (3)
- 409 . BIBLE - The Holy Bible, lea., 4to., 1909 , with another family bible. (2)
- 410 . A quantity of assorted volumes including military, literature, etc.
- 411 . A modern patinated bronze shallow dish decorated with a tiger with dragon border, together with a bronze circular plaque and stand, also a bronze model of a duck and a patinated bronze dragon. (4)
- 412 . A modern patinated bronze Chinese figure of Hotei, together with a Chinese bronze vase and cast bronze model of a goldfish .

- 413 . A Chinese patinated bronze model of a prancing horse, together with a cast brass figure of a dragon .
- 414 . A modern Chinese patinated bronze Tang style table lamp.
- 415 . Various items including a Penny Black a fishing diary, newspaper, etc.
- 416 . Model ships contained in a glass bottle .
- 417 . A reproduction dagger .
- 418 . A framed needlework picture of two eagles .
- 419 . A netsuke in the form of two wresting Kylin .
- 420 . A perpetual mantle timepiece , contained under a glass dome, 28cm high.
- 421 . A pair of gun metal vases , 9cm high.
- 422 . A pair of 19th century brass andirons , with griffin mask decoration, 27cm high. £100-£150.
- 423 . A pair of early 19th century brass chamber candlesticks , 20cm diameter.
- 424 . A Victorian brass rectangular fire kerb , 86cm wide together with a brass and copper warming pan.
- 425 . A Newlyn- style copper oblong tray , 23cm long, together with another smaller decorated with fish.
- 426 . An ARP Clement and Sons warden's warning rattle , circa 1939.
- 427 . A walnut and inlaid two division tea caddy , together with a mahogany and parquetry top box.
- 428 . A Victorian figured walnut table top collectors cabinet , together with a rosewood jewellery box and a similar mahogany example. (3)
- 429 . A copper and brass candle holder , together with a coal scuttle and kettle.
- 430 . A Chinese pewter kettle , of lobed form with pricked floral decoration, 14cm. wide.
- 431 . 434633 Sapper G B Smith, R E WWI Victory medal , together with a 1914-1918 war medal and a bronze death plaque to Patrick Connelly, a WWII Defence Medal and one other Victory medal to 31378 F Wild, RAF.
- 432 . A Continental carved wood wall mounted bracket with horseshoe shaped mirror , 66cm high.
- 433 . A large bisque head doll , with brown wig, fixed brown eyes, open mouth with four upper teeth on a composition body, 77cm high (head damaged).
- 434 . A silver mounted dressing table jar , together with assorted plated candlesticks, trophy cups and assorted flatware.
- 435 . Miscellaneous collectables , including a gaiety transistor, captive marble bottles, a small group of coins a silver backed brush, etc.

- 436 . A Kukri sheathed knife , together with a thermometer, powder flask and an ep belt.
- 437 . Four various cycling lamps .
- 438 . A gilt metal and marble box , together with three boxes of silver handled cutlery and four boxes of plated items.
- 439 . A collection of miniature spirits and liqueurs , from around the world, approximately two hundred. £120-£180.
- 440 . A group of model cars including a Mercedes 300SL and Ferrari 250GTO by Burago and three others.
- 441 . A mahogany and brass bound three draw telescope by W Harris and Co, 50 Holborn London at Hamburg , also a chromium and leather bound five draw telescope. £90-£110.
- 442 . A 1970's Bisto enamel sign .
- 443 . A silver topped rosewood walking cane , London 1927.
- 444 . A lady's silver cased open face pocket watch, JNO Gayden Barnstaple , a gentleman's silver cased open face pocket watch, another Waltham watch in a plated case, two silver watch chains, gilt metal watch chain, collection of pens and pencils etc. £80-£120.
- 445 . Various coins and ration books etc.
- 446 . Two brass vinaigrettes of cornucopia form.
- 447 . Polaire, Paris - a brass cigarette lighter .
- 448 . A Vienna wall clock , contained within a walnut and ebonised case. £150-£200.
- 449 . A 19th century gilt and porcelain mantel clock . £150-£200.
- 450 . A 19th century French gilt metal and porcelain mounted mantel clock . £250-£350.
- 451 . A Banjo in a wood case .
- 452 . Two Indian carved wood jewellery boxes .
- 453 . An Edwardian mahogany inlaid tray with central paterae together with a copy of the London Gazette extraordinary 1802.
- 454 . A late 19th century wall clock contained in a walnut case ,
- 455 . Greenslade, Bristol - a moulding plane and spare blades together with glue pots.
- 456 . A chain dial scientific set of scales , together with a boxwood and brass rule and two other items.
- 457 . A mixed quantity of sailing volumes and navigational instruments .
- 458 . A circular brass cased barometer by M Pillischer , 88 New Bond Street London contained in a leather horseshoe case.

- 459 . A Dinky Toys Tank Transporter 660, a Centurion Tank 651 together with various Hornby Dublo, a Labyrinth game, etc.
- 460 . A collection of seven Corgi car transporters and trucks , together with twenty-four Corgi cars, six Maisto supercars, racing car and a Corgi Jaguar XJS, all in original boxes. (39)
- 461 . A collection of powder compacts , together with a silver backed mirror, hair brush, etc.
- 462 . A collection of lady's evening bags , fans, gloves, etc.
- 463 . A 19th century walnut wall clock of Vienna regulator type.  
£250-£350.
- 464 . A pair of spelter female figural lamps .  
£150-£200.
- 465 . A pair of brass spiral column candlestick lamps .
- 466 . A glass lustre light fitting .
- 467 . A leather Gladstone type bag .
- 468 . A black marble mantel clock .  
£80-£120.
- 469 . A spelter figural group .
- 470 . A pair of spelter figures in military uniform.
- 471 . J Ferguson [19/20th century] Trawler fleet off a rocky shore a pair, both signed, oils on board, each 35 x 80cm.  
£200-£300.
- 472 . An oleograph , cattle in a stable.
- 473 . Norman Wilkinson Yachts in the Solent a pair of coloured prints.
- 474 . An engraving, naval architecture, an engraving of three classical female figures, Alfred Rawlings watercolour, town scene with Queen Victoria Memorial, another by the same hand, forest scene and an oil on canvas Marshall river scene with waterfall.
- 475 . Rainbach after Wilkie The Rent Day engraving.
- 476 . John Miller [1931-2002] A moorland valley, view to a village beyond signed and dated '72 bottom right, oil on canvas, 34 x 44cm.  
£150-£250.
- 477 . Arthur W Perry (early 20th century) Moors and Mist, Lydford, Dartmoor signed, watercolour, 51 x 76cm.
- 478 . Thos. Rider Morning at Killin, Perthshire together with a Continental mountainous lakeland scene.
- 479 . English School (19th century) Mountain landscape with figures and goats on a pathway together with a river landscape with view of church ruins in the background, oils on canvas.  
£100-£150.



- 480 . Innes [20th century]  
Idris from Barmouth  
signed, oil on board,  
50 x 60cm.
- 481 . A S O Moore  
Fishing Boats  
watercolour, a pair,  
dated 1970.
- 482 . Graham Clarke (20th century)  
Farmers Line  
etching with aquatint,  
together with two others (3).
- 483 . Ruerbach (early 20th century)  
Still life of a vase of flowers  
signed, oil on board.
- 484 . Frederick John Widgery  
[1861-1942]  
A Dartmoor track, travellers  
and a wagon in the distance  
signed, watercolour,  
26 x 36cm.
- 485 . A collection of five  
miscellaneous prints,  
watercolours , etc.
- 486 . Raphael J Pippet  
(19th / 20th century)  
View across a pond  
signed and dated 1899,  
watercolour and one other  
Japanese watercolour (2).
- 487 . A pair of 19th century  
watercolour profile portraits  
male and female figures,  
contained in birds eye maple  
frames.
- 488 . A pair of Nigel Hemming  
sporting bird prints and a  
Jason Threlfall print .
- 489 . Wycliffe Egginton  
Shepherd in a landscape  
signed, watercolour.
- 490 . A still life watercolour picture  
of fruit and berries .
- 491 . A pair of continental  
miniatures in ivory frames .
- 492 . A set of eleven Cries of  
London prints .
- 493 . Follower of Louis Pierre  
Verwee  
Sheep in a meadow, a  
chicken in the foreground  
oil on panel, bears a  
signature, 16 x 22cm.  
£100-£150.
- 494 . A celluloid simulated  
tortoiseshell six-piece  
dressing table set .
- 495 . DUCKWORTH, Francis  
The Cotswolds, Illustrated by  
G.F.Nicholls, cloth, 8vo.,  
frontis. detached, A & C Black  
1908. With... a quantity of  
assorted volumes.
- 496 . Two Aviation prints , together  
with two watercolours.
- 497 . Archibald Thorburn signed  
print of Grouse.
- 498-499. No lots.

#### **CARPETS, RUGS AND FURNITURE**

- 500 . A Victorian ebonised torchere,  
applied with gilt metal mounts.
- 501 . A Victorian mahogany single  
wardrobe .
- 502 . A pair of ebonised arched  
rectangular doors , the  
bevelled mirror inserts painted  
with flowers, 171cm high.

- 503 . A nest of three Edwardian occasional tables .
- 504 . An early 19th century mahogany bow-fronted chest of two short and two long drawers, raised on bracket feet.  
£150-£200.
- 505 . A 19th century mahogany bow-fronted platform toilet mirror .
- 506 . An 18th century oak chest of four long drawers, raised on bracket feet.  
£80-£120.
- 507 . An oak secretaire chest of drawers , having a set of dummy drawers above three long drawers, raised on bracket feet.  
£150-£200.
- 508 . An 18th century oak bureau .
- 509 . A Jacobean walnut rectangular chest of four drawers , raised on bun feet (with alterations).  
£100-£150.
- 510 . A late 19th century inlaid mahogany bow-fronted dressing table .
- 511 . A Regency rosewood Canterbury (some damage).  
£150-£200.
- 512 . An antique oak low three drawer chest .
- 513 . An antique limed oak two door side cupboard .  
£150-£200.
- 514 . A military type brass bound mahogany chest of four long drawers with recessed brass handles.  
£80-£120.
- 515 . An antique oak side cupboard with lozenge panel door.  
£200-£250.
- 516 . An 18th century oak coffer with triple domed front.  
£150-£200.
- 517 . A mahogany and upholstered piano stool on cabriole legs.
- 518 . An 18th century oak coffer .  
£150-£200.
- 519 . A Victorian rosewood book stand .  
£80-£120.
- 520 . An early 20th century mahogany and satin birch crossbanded workbox on tapering supports with spade feet.
- 521 . A Georgian mahogany circular tripod tea table .  
£150-£200.
- 522 . A walnut Sutherland table .
- 523 . A pine folding stool of X-frame design.
- 524 . An 18th century oak chip carved coffer with hinged canted top.  
£200-£250.
- 525 . A walnut framed arched rectangular wall mirror in the early 18th century manner, 68 x 38cm.
- 526 . A pair of 1920's dining chairs and a set of four Edwardian walnut dining chairs .
- 527 . A set of six oak dining chairs and a pair.
- 528 . An early 19th century hanging oak corner cupboard .

- 529 . A late 19th/20th century cane conservatory chair .  
£100-£150.
- 530 . A white painted wall cabinet .
- 531 . A Victorian burr walnut veneer card table , raised on trestle end supports (some damage).  
£250-£300.
- 532 . An Edwardian two-door glazed bookcase , raised on a plinth base.
- 533 . A Victorian mahogany work table .  
£100-£150.
- 534 . An 18th century oak and later reconstructed side table .
- 535 . A rectangular gilt framed mirror .
- 536 . An ornate gilt framed mirror .
- 537 . An 18th century oak coffer with initials CB.  
£150-£200.
- 538 . A 17th century limed oak coffer , raised on trestle supports.  
£100-£150.
- 539 . A mahogany pedestal desk .  
£100-£150.
- 540 . A Victorian circular mahogany tilt top table .
- 541 . An 18th century Pembroke table .
- 542 . A mahogany upright cabinet .
- 543 . A plum pudding mahogany straight front chest of four long drawers, on plinth base.  
£200-£250.
- 544 . An oak barley twist drop flap table .
- 545 . An Edwardian mahogany bureau bookcase .
- 546 . A 19th century pine corner cabinet .
- 547 . A Persian rug , having a triple row of medallions on a brick red ground, surrounded by a triple border (faded).
- 548 . Seven various Belouchistan saddle bags , now adapted as cushions, together with two Kelim saddle bags, a Quashghai saddle bag and a Kelim cushion.  
£250-£300.
- 549 . A Tabriz pictorial mat , with a design of a running hare among foliage, 80 x 60cm.
- 550 . A Belouchistan rug , with a diagonal striped geometric medallion field, 153 x 80cm
- 551 . A Turkish mat , with hexagonal pole medallion, 95 x 60cm and another, the rust field with a line of lozenges. (2)
- 552 . A Shiraz rug , the rust field with an indigo hexagonal pole medallion, 108 X 122cm.
- 553 . A machine made carpet of Turkoman type , with an olive green field and octagonal medallions, 297 x 202cm, a machine made rug with a red field and central medallion, 178 x 91cm and an Afghan rug with a beige field and hexagonal medallion, 157 x 89cm (3).
- 554 . A Belouch prayer rug , with rectangular mihrab, 141 x 103cm and one other.

- 555 . A Belouch prayer rug , with mihrab and serrated leaf border, 135 x 100cm.
- 556 . An Usbech carpet , having three medallions on a red ground surrounded by a triple border.
- 557 . A Turkoman rug , the brick red field with four rows of geometric medallions, 189 x 107cm (moth damage).
- 558 . A Quashgai rug , the field with stepped lozenge pole medallions, 223 x 168cm.
- 559 . A Kurdish rug , of large size, the rose field with a row of four indigo medallions, 316 x 174cm. £200-£250.
- 560 . A Tekke Turkoman rug , the field with hatchli designs, 199 x 134cm. £100-£150.
- 561 . A pair of Tabriz mats , the camel fields with floral sprays, 86 x 40cm. £120-£180.
- 562 . A Shiraz rug , the shaded wine field with central indigo medallions, 147 x 85cm, another Shiraz rug 180 x 105cm, (damaged), three various Shiraz mats, a small Belouch mat and a small prayer mat. (7).
- 563 . An Afghan rug the wine field with triple quartered octagons, 119 x 118cm.
- 564 . A Shiraz rug , the field with twin lozenge medallions, 120 x 92cm together with a Belouchistan rug with a compartmented field, 103 x 73 cm.
- 565 . An Afghan rug , the red field with three octagonal medallions, 114 x 90cm, an Afghan Belouch mat with lozenge field, 111 x 59cm and two Shiraz mats with indigo fields. (4).
- 566 . A Quashgai rug , the field with a twin indigo pole medallion, 132 x 86cm and a Turkoman prayer rug with lozenge lattice mehrabs. (2).
- 567 . A Shiraz rug with a triple indigo pole medallion. £150-£200.
- 568 . A 'Golden' Afghan carpet , with three rows of octagonal guls, 275 x 202cm.
- 569 . A Georgian mahogany rectangular chest of two short and three long drawers . £150-£200.
- 570 . A 19th century mahogany wash stand with two drawers. £80-£120.
- 571 . An Edwardian oak open bookcase , with adjustable shelves.
- 572 . An Edwardian oak gate leg table .
- 573 . An Edwardian inlaid mahogany Sutherland table .
- 574 . An Edwardian inlaid mahogany open music cabinet . £100-£150.
- 575 . An Edwardian walnut two door cabinet .
- 576 . An oak and pine elbow chair , and one other.
- 577 . An Edwardian oak single drawer side table .

- 578 . Russell - A walnut chest of three long drawers , together with a matching dressing table.
- 579 . An early 20th century mahogany extending dining table , 226 x 115cm approximately.
- 580 . A swing frame cheval mirror .
- 581 . A mahogany tripod jardiniere stand .
- 582 . A mahogany single drawer side table .
- 583 . A pair of painted pine panels.
- 584 . An Edwardian inlaid mahogany shaped top occasional table .  
£80-£120.
- 585 . An Edwardian mahogany and floral marquetry display cabinet .  
£250-£350.
- 586 . An Edwardian inlaid mahogany double bed .
- 587 . A Victorian mahogany scroll end settee .  
£200-£300.
- 588 . An Edwardian inlaid mahogany piano stool .
- 589 . A Victorian inlaid walnut music cabinet .
- 590 . A gilt oval mirror with griffin cresting .  
£100-£150.
- 591 . A 19th century Italian carved walnut and cane chair .
- 592 . A Victorian rosewood and ebonised four tier whatnot .  
£100-£150.
- 593 . An iron frame and glass lustre chandelier .  
£400-£600.
- 594 . A gilt oval mirror with urn cresting.  
£200-£250.
- 595 . A Victorian mahogany Duchesse dressing table .  
£150-£200.
- 596 . A mahogany lobed top wine table .
- 597 . An Edwardian mahogany dressing table .
- 598 . A Coalbrookdale type cast iron garden bench .  
£150-£200.
- 599 . A Caucasian runner , the indigo field with a row of four hexagonal medallions, enclosed by a main powder blue serated diagonal striped border, 353cm x 99cm (with wear).
- 600 . A Turkoman juval , the chocolate brown field with three rows of geometric medallions, 114cm x 71cm.
- 601 . A Kurdish runner , the indigo field with a row of four brick red lozenge medallions, enclosed by a diagonal striped border,  
388cm x 109cm.
- 602 . A Caucasian runner , the indigo field with an all over geometric boteh design, enclosed by a main beige geometric border,  
246cm x 101cm.

- 603 . A Kurdish rug , the indigo field with triple hooked geometric medallions, enclosed by a main rust serated leaf border, 118cm x 86cm, a Qashgai rug, the indigo field with an all over serated palmette design, 139cm x 101cm and an Afghan rug, with a cream field and striped designs (3).
- 604 . A Caucasian rug , the indigo field with triple cruciform stellar medallions, enclosed by a main rose stellar medallion border, 242cm x 115cm, a Shirvan rug, the red field with triple serated lozenge medallions, 160cm x 117cm and two other Caucasian rugs with triple flowerhead and twin geometric medallions - All with wear and damage. £80-£120.
- 605 . An early 19th century oak side cupboard . £150-£200.
- 606 . A late Victorian mahogany two door glazed bookcase . £200-£250.
- 607 . An oak 19th century hanging corner cupboard .
- 608 . An oak gateleg table , together with an octagonal wine table. (2)
- 609 . An Amberg office filing cabinet with fifteen drawers . £100-£150.
- 610 . A gilt framed circular convex mirror , together with a gilt framed cartouche mirror.
- 611 . An 18th century carved oak hall chair , together with a Victorian mahogany armchair. (2)
- 612 . A George III mahogany tripod stand with raised edge to the circular top, vase turned stem and on three splayed legs, 30cm (11 3/4in) diameter.
- 613 . A Caucasian rug .
- 614 . A Victorian walnut and inlaid games table .
- 615 . A Quashgai rug , the field with a design of repeated lozenges. (damaged).
- 616 . A Tekke rug , with two rows of quartered medallions 152 x 119cm.
- 617 . A stained mahogany chest of five drawers .
- 618 . A Georgian provincial oak plate rack , with four open shelves, 192cm wide. £100-£150.
- 619 . A French-style carved and stained beech single bedstead .
- 620 . A Turkoman juval , 46 x 81cm .
- 621 . A mahogany extending occasional table .



17



22



25



34



35



39



48



61



78



86



95

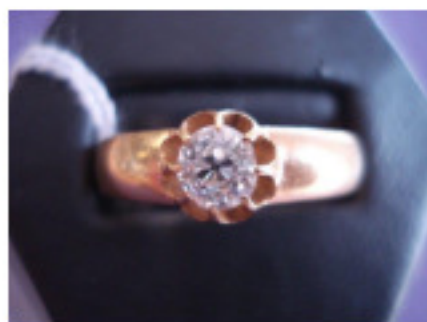


104





105



113



114



159



185



196



208



230



239



280



331



332





333



334



357



425



490