

SECOND DAY'S SALE
THURSDAY 22ND APRIL 2010
**COLLECTORS' ITEMS,
WORKS OF ART & CLOCKS**

Commencing not before 12.30pm

Collectors' Items, Works of Art and Clocks will be on view:

Saturday 17th April 9.00am to 1.00pm

Sunday 18th April 2.00pm to 4.00pm

Monday 19th April 9.00am to 5.15pm

Tuesday 20th April 9.00am to 5.15pm

Wednesday 21st April 9.00am to 5.15pm

Works of Art
& Collectors' Items



Enquiries: Martin McIlroy

Tel: 01392 413100

Email: mcilroym@bhandl.co.uk

Clocks



Enquiries: Leigh Extence

Tel: 01392 413100

Email: extencel@bhandl.co.uk



450

450.
An Indian Vizagapatam ivory on ebony inlaid folding chess board, bordered with chequered banding, 19th Century 43.5 x 43.5cm.
£300-500



450A

450A.
A Staunton pattern ivory chess set of club size, one side stained red the other side left natural, the king 10.5cm. high, the pawn 5cm. high, finials to white queen and white bishop missing.
£400-600



451

451.
A 19th century ivory Barleycorn pattern chess set, one side stained red the other side left natural, the king 9cm. high, the pawn 3.5cm. high.
£150-200



451A



452



453



454



451A.
A Charles II gold two guinea coin 1664, first laur. bustr. with elephant below.
£1500-2000

453.
An Edward VII gold five pound coin, 1902.
£1000-1200

452.
An American gold twenty dollar coin, 1893.
£800-1000

454.
A Charles II Five Guinea coin, first laur. bust r., 'Tricesimo', 1678.
£1500-1800



456

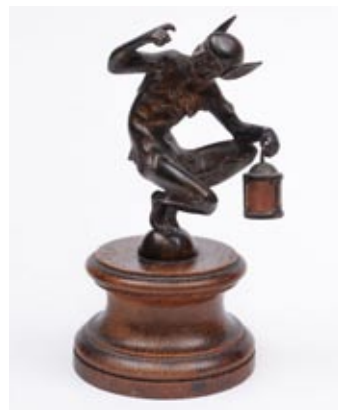
456.
OF INTERNATIONAL BALLOONING INTEREST
Three "Sparrow" farthing
 tokens for the ascent of I.E.Farthing at Oxford in 1823 and 1825, five bronze plaques for the Aero-Club De Belgique Gordon Bennett Cup for 1923, 1924, 1925 and 1926, awarded to Captain C.W.Berry. contained in a walnut travelling decanter case with double sided glazed hinged door, containing three clear glass decanters and stoppers, 42 x 36cm.
 * The Gordon Bennett Cup is the oldest ballooning race and was first held in Paris in 1906. The event was sponsored by Gordon Bennett owner of the New York Herald newspaper. The race was held each year up until the Second World War and revived again in 1983. This

year The Gordon Bennett Cup will take place at Bristol on 24th September, 2010, six countries, 13 teams have been nominated so far.

£1000-1200



458



457

457.
A bronze car mascot in the form of a crouching elf or pixie holding a lantern and beckoning, the base stamped Asprey, London, Reg No 583063, on a polished wood base, 18cm. high.

£200-250

458.
HENRY CROUCH, LONDON.
A 19th century lacquered brass binocular microscope, with coarse and fine rack and pinion focusing, circular mechanical stage with sub-stage condenser, plano/concave mirror, the Y-shaped stand stamped Henry Crouch, London, no 1515, with assorted eye pieces and objectives contained in a fitted mahogany case.

£500-700



459

459.
BAKER, 244 HIGH HOLBORN, LONDON A lacquered brass monocular microscope with rack and pinion focusing, triple nose piece, circular revolving stage, with concave mirror below, the Y-shaped stand signed Baker, 244 High Holborn, London, with spare objectives and eye piece in a stained wood case, together with a large collection of prepared slides.

£300-400



460

460.
A mahogany and brass bound campaign cellaret of oval coopered form, with stamped brass label to the side "9th Lancers", with brass loop carrying handles to the sides, and with oval zinc liner, 90cm. wide.

£300-400



461

461.
A pair of carved wood panels depicting hanging gamebirds within a cartouche, in the manner of Grinling Gibbons, each panel, 43 x 29cm.

£600-800



462

462.

A Nicole Frere musical box, playing six airs, gamme No 813, with 27cm. key wound cylinder, the comb and frame stamped Nicole Frere, and the frame numbered 24901, contained in a rosewood and inlaid case with inlaid scroll decoration, 46.5cm. wide.

£400-500



463

463.

A 19th century musical box with ratchet wind 33cm. cylinder movement in a rosewood and simulated case, the lid inlaid with basket of flowers and boxwood stringing, 58cm. wide.

£300-400



464

464.

A Robert "Mouseman" Thompson carved oak tray, of kidney shaped outline, the sides with two carved mice, 46cm. wide.

£200-300



469 detail



469

465.
A mid 19th century needlework sampler with verse, view of Solomon's Temple, birds, insects, flowers, animals and flowering shrubs, enclosed within a strawberry meander border, worked in coloured silks by Eliza Ann Coward, dated Jult 27th, 1840, aged 14 years, 42 x 32cm.
 £150-200

466.
A 19th century needlework sampler with verse, birds, insects, flowering shrubs, goat herds and dogs, enclosed by a floral meander border, worked in coloured silks by Mary Ann Crook, aged 10 years, 43 x 35cm contained in a rosewood frame.
 £150-200

467.
A 19th century needlework sampler with verse, birds and flowering shrubs, enclosed by a meander border, worked in coloured silks by Rebecca Brandon and dated 1839, 35 x 31cm, contained in a maple frame.
 £100-200

468.
A mid 19th century needlework map sampler, depicting Europe and North Africa, contained within a floral meander border, worked by Maria Cave, British School, Banbury, aged 11 years and dated 1856, contained in a maple frame, 51 x 58cm.
 £100-200

469.
A late 18th/early 19th century gentlemen's silk waistcoat, with all over foliate and sequin design, the pockets and borders decorated with trailing foliate, flowerheads and sequins, together with a letter of provenance dated 1904 stating that it belonged to Sir M. Hicks-Beach.
 £200-250

Lot 470 - Over page.



471

471.
An Indian carved hardwood writing slope, the hinged top enclosing a fitted interior of lidded compartments, the hinged sloping fall carved with deities and trailing foliage, with similar decoration to the sides and front, 45cm. wide.
 £300-500

472.
A Chinese black lacquer, inlaid and gilt decorated charger, the central panel depicting two warriors in a pagoda landscape, with ivory inlaid faces, with five smaller gilt cartouches decorated with birds and landscape vistas, 50cm. diameter.
 £400-600



472



470

470.

A pair of Aubusson tapestry wall hangings, each woven with a basket of flowers suspended from foliate swags, within a foliate meander border, 19th century, each panel 289 x 132cm approx
*Provenance: By repute previously used as bed hangings at Mamhead House, Devon, the property of Sir Ralph Newman Bt.

£1000-2000

473.
A 19th century Chinese papier mache tea caddy of shaped circular outline, with domed hinged lid, decorated over all with pagoda landscapes, containing two pewter lidded compartments, 27cm. diameter.

£200-300



474

474.
A Japanese cloisonne jar and cover of hexagonal outline. the side panels decorated with birds, flowers and insects, with similar decorated lift-off lid, raised on a spreading circular foot, 11cm. high.

£250-350



475

475.
A Japanese carved bone opium pipe case of rectangular outline, with pull-off top, decorated with a scene of a samurai warrior and attendants in a garden landscape, containing a bamboo and gilt bronze mounted opium pipe, 22cm. long.

£200-300



476

476.
A Japanese carved ivory okimono of six immortals perched on a rocky outcrop, signed to the base, 14cm. high. Meiji period.

£1000-1500



477

477.
A Japanese carved ivory okimono of a scribe working at a table while a child plays beside him, signed to inset red tablet to the base, mounted on a low rectangular stand, 10cm. wide.

£500-600

478.
A Chinese silk shawl with floral embroidered decoration to a black ground, with silk tassle fringe.

£250-300
 101

479.

A Japanese gold lacquer tebako (accessory box) of rectangular form with rounded indented corners, flush fitting cover and gilt-metal cord rings, decorated overall with buildings, figures and equestrian figures amongst lake and landscapes on a nashiji ground, the sides and cover with twelve mon (family crest) for a branch of the Hosokawa Clan, the interior tray with engraved white metal handle and four metal lined boxes and covers (one lid lacking) and a lid (base lacking), late Edo/Meiji period, 28 x 21cm. (minor damage, some wear)



£2000-3000

479



479 open



480

480.
A late 19th century bronze study of the equestrian monument to Bartolomeo Colleoni by Donatello, the mounted knight wearing Renaissance style armour, holding a baton in his right hand, on a stepped marble base, 62cm. high.

£800-1200

481.
A 19th century lead figure of Mercury, after Giambologna, a/f, 115cm. high.

£400-600

482.
A late 16th/early 17th century Nuremberg brass alms dish, the central boss with vase and caryatid embossed decoration, enclosed by gothic script and punch decorated rim, 47cm. diameter.

£500-700



481



482



483

483.
A gilt metal three tier eighteen light electrolier, with a baluster shaped cage, having faceted glass prismatic suspensions, 95cm. high.

£800-1000



484

484.
A painted metal eight light electrolier, with a baluster shaped cage and two tiers of four lights, having faceted glass prismatic suspensions, 85cm. high.

£300-500



485

485.
A painted steel circular ceiling light, the cage mounted with faceted glass prismatic suspensions, with glass flowerhead and ball suspensions to the outer rim, 90cm diameter.

£500-700

486.
Two bronze and gilt metal mounted colza oil lamp style light fittings, of circular reeded form, with applied scroll and mask decoration, converted from gas to electricity, 45cm. wide.

£300-400

487.
A late 19th century novelty bronze desk top box in the form of a horned devil supporting a large travelling trunk with its tail grasping a staff, the travelling trunk with a hinged end standing on a cylindrical cupboard with hinged door, mounted on a polished marble base, 23cm. high.

£150-250



487

488.
A 19th century carved giltwood eagle surmount with inset green glass eye and out stretched wings, 46cm, wide.

£150-200

489.
A 19th Century plaster portrait bust of a scholar, signed and dated to the reverse "Williams Ipswich 1862" on an overpainted socle and raised on a simulated scagliola column, 186cm overall height.

£400-600



486



490

490.
A late 19th century bronze table centre piece in the form of a gondola, the craft steered by a gondolier having applied gilt metal floral garlands to the side of the boat, raised on shaped support of a seahorse and waves, to an oval base with grotesque masks and talon feet, 59cm. long.

£300-400



489



494

491. A set of four 19th century spouted quart mugs, with S-scroll handles, inscribed 'Blandford' to the base, the interior base stamped Sanders & Sons, London, with crowned VR marks to the sides, each 16.5cm. high.

£100-150

492. Two late 16th/early 17th century cast iron fire dogs, with arched and scroll decorated necks and swept feet, 48cm. high. 49cm. long.

£150-250

493. A carved alabaster figure of a young seated peasant girl being offered a flower by her admirer 82 cm high.

£1500-2000

494. After Cousteau A large pair of bronze models of the Marly Horse, raised on naturalistic bases, 57cm. high.

£500-700



493

495. An Indo-Persian inlaid hardwood table top cabinet, of rectangular outline the exterior inlaid with ivory elephants, peacocks and urns of flowering shrubs, containing an arrangement of four short and one single long drawer about a central inlaid panel door, on a moulded plinth base, 45cm. wide.

£1500-1800



495

496.

A pair of early to mid 19th century face screens, the card leaves with painted floral decoration with ivy leaf border, mounted on ring turned and knopped handles.

£100-200

497.

A late 18th/early 19th century tortoiseshell and silver mounted casket, the domed hinged lid with loop carrying handle and bordered with silver mounts, the base with caryatid's to each corner, 13cm. wide.

£1000-1200



497



498



499

498.

A mid 19th century tortoiseshell tea caddy of inverted break front outline, the shallow domed hinged lid, enclosing two lidded compartments with ivory handles, with shaped cushion base raised on ball feet, 20.5cm. wide.

£300-400

499.

A 19th century papier mache ink stand of scrolling cushioned design, with central lidded compartment, flanked by two clear glass inkwells, with painted lakeside scene within a gilt cartouche and gilt floral decoration to the sides, 28cm. wide.

£250-350

501.

An enamel circular salt with floral decorated panels, raised on swept legs, 6.5cm. diameter, three 19th century enamel snuff boxes of cylindrical tapering form and a modern enamel patchbox in the form of an apple.

£350-400

500.

A 19th century mahogany and boxwood strung rectangular tea caddy the hinged lid enclosing an arrangement of seven lidded compartments, 46cm. wide.

£150-200



501



502.

A set of four early George III embossed paper and gouache bird pictures in the manner of Samuel Dixon depicting a parrot, water and other birds with flowers, butterflies, shells and grapes, 30 x 39cm. (3) and 29 x 38cm. (1) in giltwood and gesso frames (one backboard with trade label for "Spilsbury, Engraver map and print seller, Russel Court, Covent Garden, London")

£2000-4000

* Samuel Dixon of Dublin was famous for his embossed bird pictures which incorporated a technique which Dixon referred to as 'basso relievo', whereby parts of the design were raised by means of a copper plate. Dixon along with his contemporary Isaac Spackman, based many of his designs on illustrations from George Edwards' 'Natural History of Uncommon Birds' (1743-51).



505, 503, 506

503.

A Decorative French Victorian Carriage Clock, the eight day duration movement having a platform lever escapement and striking the hours and half hours on a gong with push button repeat, the backplate stamped with the serial number '6572', the white enamel dial having stylised black Arabic numerals with coloured floral swags between, with decorative pierced and engraved brass hands and a finely cast gilt brass pierced mask, the Anglaise case with fluted pillars to the corners and a decorative handle, height: 17cm (handle down)

£1200-1800

504.

A French Victorian Corniche cased carriage clock, the eight day duration movement having a later platform lever escapement and striking the hours and half hours on a gong with push button repeat, the white enamel dial having black Roman numerals and blued steel spade hands, contained in a brass Corniche case, height: 14.5cm (handle down)

£250-300

505.

A French Victorian Repeating Carriage Clock, the eight-day duration movement having a platform lever escapement and striking the hours and half hours on a gong with push button repeat, the white enamel dial having black Roman numerals and blued steel spade hands, with a brass Corniche style case, height: 15cm (handle down)

£300-400

506.

A Decorative Edwardian French carriage Clock, the eight-day duration movement having a platform lever escapement and striking the hours and half hours on a gong with push button repeat, the silvered dial having starburst engine-turned decoration to the centre, black Arabic numerals and blued steel hands, the brass case having arched glass front and sides, fluted columns and applied decorative mouldings to the front, height: 12.5cm (handle down).

£200-250



507

507.
Richard et Cie
A Decorative French late-Victorian carriage Clock, the eight-day duration movement having a platform lever escapement and striking the hours and half hours on a gong with push button repeat, the backplate stamped with the maker's name 'R & Co', the silvered chapter ring having black stylised Arabic numerals, a filigree centre, matt-gilt mask and blued steel spade hands, the brass case having turned pillars to the four corners and with fine bands of filigree work to all sides and set on the pillars and handle, height: 18cm (handle down).

* Richard et Cie were founded in Paris in 1848 as Lemaître & Bergmann opening a branch in London in 1857 which became Richard & Co ten years later. Clocks with the just the initials, as this is, and not the 'snake' trademark donates clocks retailed by the firm but not made by them.

£300-500



510

508.
Charles Frodsham
A contemporary French carriage clock, the eight-day duration movement striking the hours on a bell, the white enamel dial having an engraved gilt mask, black Roman numerals and signed 'Charles Frodsham, London', contained in an Anglaise style case with fluted columns, height: 17cm.
 * The Charles Frodsham clock company was a continuation of the original 18th century Frodsham business now mainly as a retailer of clocks.

£250-300

509.
A French Champleve Enamel Carriage Clock, the eight day duration timepiece movement having a replaced platform lever escapement, the white enamel dial having a frosted gilt mask, blued steel hands and signed by the retailer 'Payne & Son, Tunbridge Wells', the serpentine brass case with champleve enamel bands to the top and bottom friezes, height: 8.5cm. Complete with leather carrying box.

£150-200



511

510.
Henry Marc, Paris
A French gilt-metal mantel clock, the eight-day duration movement striking the hours and half hours on a bell with an outside countwheel and silk suspension, the backplate stamped with the maker's name & serial number 'Hy Marc, Paris, 22271', the repoussé dial having individual porcelain plaques for the blue Roman hour numerals and with blued steel 'clover' hands, the gilt-metal case of classical form with rococo & floral decoration, standing on a matching base, height: 34cm.

£300-500

511.
A late-Victorian English skeleton clock, the eight-day duration, single fusee movement with passing strike on a bell, the scalloped-edged painted dial having black Roman numerals and blued steel spade hands, with tapered, shaped plates, standing on a round marble plinth and further wooden base under a glass dome, height: 42cm (including base & dome).

£300-500



512

512.

W. Grace, London, a William IV mahogany bracket clock, the eight-day duration, double fusee movement striking the hours and half hours on a bell with pull repeat, with the eight-inch round painted dial having black Roman numerals and blued steel spade hands, the mahogany case having canted corners with applied carved mouldings to the front and to the front of the scroll sides, with a curved top, height: 44cms.

* William Grace is recorded as working in London from before 1855 until 1869.

£400-600



513

513.

William Jones, London

A late 18th century fruitwood bell-top bracket clock, the eight-day duration, double fusee movement having an anchor escapement and striking the hours on a bell with the backplate fully engraved with floral and rococo decoration, the eight-inch silvered arched dial engraved with black Roman numerals, Arabic five-minute outer markings, floral & swag corner decoration, with the maker's name 'William Jones, London' engraved to the dial centre and a 'strike/silent' dial within the arch, the bell-top, fruitwood case having glazed sides, canted corners, brass fretwork to front and surmounted with a brass carrying handle, height: 51cm (handle down)

* There are a number of clockmaker's named William Jones recorded as working in London in the 1700's.

£3500-4000



514

514.
Ellicott, Royal Exchange
A mahogany bracket clock, the double fusee, eight-day duration movement striking the hours on a bell with the eight-inch round, convex dial having black Roman numerals, blued steel hands and signed by the maker 'Ellicott, Royal Exchange', with a cast brass bezel, the mahogany dome topped case having decorative boxwood inlay to the front, height: 41cm.

* The Ellicott family were well known clockmakers working at the Royal Exchange, having started with the ingenious maker John Ellicott who died in 1733. A succession of family members, including John jnr, one of the countries most eminent makers, continued the business with, at the date this clock was made, Edward jnr. who became a Freeman of the Clockmakers Company in 1795 before becoming Master, and died in 1835.

£400-500



515

515.
Brookhouse, Sheffield.
A 19th century drop-dial wall clock having a single fusee, eight-day duration movement, the fourteen inch round painted dial having black Roman numerals and signed 'Brookhouse, Sheffield', the octagonal coromandel case inlaid with mother-of-pearl decoration and having a visible pendulum bob aperture to the front, height: 87cm.

* John Brookhouse, watch and clockmaker, became insolvent on the 24th November 1840 with the business continued by his wife Sarah at 52, Forgate, Sheffield.

£500-700



517



516

516.
F. Lickert, Salisbury
A Regency rosewood wall clock, the eight day duration, fusee movement having an anchor escapement, with the twelve-inch round convex dial having black Roman numerals and signed with the maker's name 'F. Lickert, Winchester St, Salisbury', with heart-shaped blued steel hands and a cast brass bezel, the octagonal case having brass inlaid decoration to the front panels, diameter: 44cm.

* F Lickert is recorded working in Winchester Street Salisbury in Robinson's Directory of 1839.

£600-800

517.
An Edwardian brass dialled wall clock, the double fusee, eight-day duration movement striking the hours on a gong, with the eight-inch square brass dial engraved with black Roman numerals, floral & rococo dial centre and matching spandrels, with blued steel spade hands, contained in a walnut case with the barley-twist columns having cast brass capitals and having wooden frets to the side doors, height: 50cm.

£700-900

518.

William Gill, Maidstone

A mid 18th century lacquer longcase clock, the five pillar, eight-day duration movement striking the hours on a bell with internal rack striking, the twelve-inch arched brass dial engraved with wheatear border decoration, with the raised, silvered chapter ring engraved with black Roman numerals, Arabic outer five-minute numerals and 'fleur-de-lys' half-hour markings, the matted dial centre having engraved floral and bird decoration, ringed winding holes and having a subsidiary seconds dial and date aperture, with 'female-head' cast brass corner spandrels and blued steel hands, the silvered boss to the arch engraved with the maker's name 'Wm Gill, Maidstone', the case of 'tortoiseshell' lacquer decorated with raised gilt chinoiserie work, with an arched trunk door, the arched hood with three-quartered columns to the front and two giltwood ball and spire finials, height: 200cm.

* William Gill is recorded as working in Maidstone, Kent in the early 18th century having been apprenticed in 1704 and given his freedom in 1710. He is one of Maidstone's most celebrated & competent clockmakers' with a number of fine longcase clocks known by him. He supplied the clocks for a number of public buildings including both Rainham and St Nicholas of Leeds churches.

£800-1200

519.

A mahogany moonphase longcase clock, the eight day duration movement striking the hours on a bell with the fourteen-inch painted arched dial having black Roman numerals, gilt floral corner spandrels and moon



518



519

phase disc to arch, with decorative brass hands and subsidiary seconds dial and date aperture, the falseplate to the dial embossed with the dial makers' name 'Finnemore & Sons' of Birmingham, the case profusely inlaid in various woods and having a short door, canted corners to the trunk, fluted hood pillars with brass capitals and a swan neck

pediment, height: 250cm.

* Finnemore & Son were well known Birmingham dialmakers' with William Finnemore originally being part of the Walker & Finnemore partnership, continuing on his own account from 1812 and becoming ' & Son' from 1828 until 1836.

£800-1000

520.

Wesley, Denham

An oak longcase clock, the eight day duration movement striking on a bell with the twelve-inch painted arched dial having black Arabic numerals, floral corner spandrels, the decoration to the arch depicting swans on a lake, with brass hands, a subsidiary seconds dial and signed 'Wesley Denham', the false plate stamped with the dialmakers' name 'Francis, Birmingham', the case having a curved trunk door, plain base, with the hood having fluted columns with brass capitals and three ball-and-spire finials to the moulded pediment, height: 225cm.

* The dialmaker William Francis is recorded as working firstly in Thorp Street, then Old Inkleys and finally 11 Smallbrook Street, Birmingham from 1810 until 1831 and was a prolific maker.

£400-600

521.

An Oak Longcase Clock, the eight day duration movement striking the hours on a bell with the twelve-inch painted arched dial having black Roman numerals, subsidiary seconds dial, date aperture and blued steel hands, having a painting depicting Carew Castle within the arch and various rural scenes to the four corners, the falseplate to the dial stamped with the dialmaker's name 'Wilson, B/Ham', the oak case having a plain base, arched door to the trunk, with three gilt-wood finials and turned three-quarter columns to the pagoda topped hood, height: 238cm.

* James Wilson, working pre-1777 to 1809, was one of the pioneers of the Birmingham dial making industry having dissolved his partnership with the other well-known maker George Osborne in 1777. He was considered as one of it's finest exponents as well as one of the most prolific.

* Carew Castle, Pembrokeshire, was originally a Norman fortification developing into a fine Elizabethan country house and was the site of the last great tournament staged in Britain in 1507.

£500-600

522.

John Bennett, Plymouth

A late Georgian longcase clock, the eight-day duration movement striking the hours on a bell with the twelve-inch arched brass dial having a subsidiary seconds dial, date aperture and engraved with black Roman hour numerals, floral corner decoration, with an engraved depiction of Father Time within the arch and maker's name 'J. Bennett, Plymouth' to the centre, the stained case having an arched trunk door, fluted, canted corners to the trunk, turned pillars to the hood and surmounted by three wooden ball finials, height: 214cm.

* John Bennett is recorded as working in Plymouth in the mid-to-late 18th century.

£500-700

523-530. No Lots.



A 19th century 12 bolt divers helmet
Sold for £16,000

We are now pleased to accept entries for our
Maritime Sale to be held on
Wednesday 16th June 2010

Please contact Brian Goodison-Blanks

01404 510000

bgb@bhandl.co.uk

www.bhandl.co.uk enquiries@bhandl.co.uk