

FIRST DAY'S SALE

WEDNESDAY 21ST APRIL 2010

WATCHES and JEWELLERY

Commencing not before 1.30pm

Silver, watches and jewellery will be on view on:

Saturday 17th April 9.00am to 1.00pm

Sunday 18th April 2.00pm to 4.00pm

Monday 19th April 9.00am to 5.15pm

Tuesday 20th April 9.00am to 5.15pm

Limited viewing on sale days

IMPORTANT

Anyone wishing to view the watches and jewellery will be requested to show identification

COLOURED GEM STONES

Prospective buyers of coloured gemstones should be aware that some stones might have been treated to enhance their colour or clarity. Sapphires and rubies are commonly heat-treated and emeralds are commonly oiled. In the case of heat treatment, this is permanent but can affect the durability of the stones. In the case of oiling, this may need to be redone after a period of years. The international jewellery trade has generally accepted these methods. It is not possible for Bearnese, Hampton & Littlewood to obtain gemmological reports on stones offered for sale and so prospective buyers should assume all gemstones may have been enhanced by some method.

Weights and measurements are approximate guidelines only unless stated to the contrary



Enquiries: Jethro Marles

Tel: 01392 413100

Email: marlesj@bhandl.co.uk

201.

A gentleman's 18ct gold chronograph pocket stop watch, the white enamel circular dial with centre seconds, Roman numerals and calibrated outer dial, the dial and backplate numbered 3/2911.

£450-550

202.

Thomas Russell & Son A gentleman's 18ct gold hunter pocket stop watch, the circular dial with Roman numerals, centre seconds with stop button in the band, the dial and back plate signed and numbered 88882 in a plain gold case.

£600-800

203.

Stewart Dawson & Co. A gentleman's 18ct gold keyless lever openface pocket watch, the signed circular white enamel dial with Roman numerals and subsidiary seconds dial in a monogrammed 18ct gold case.

£400-500

204.

James Bishopp. A gentleman's 18ct gold keyless lever minute repeating hunting cased pocket watch, engraved with a double eagle crest above motto, the dust cover inscribed H.P.Hughes Gresham Club, London, £20 Reward, the circular white enamel dial with Roman numerals and subsidiary seconds dial, the movement signed and numbered 54917.

£900-1300

205.

G.E. Frodsham An 18ct gold half-hunter keyless pocket watch, the white enamel dial having black Roman numerals, blued steel spade hands and signed 'G.E. Frodsham, 31 Gracechurch Street, London', the three-quarter plate movement having a lever escapement with a split-bimetallic balance and over-coil hairspring, signed to the backplate 'G.E. Frodsham, 31 Gracechurch Street, London. 1875/16722', the half-hunter case hallmarked for 18ct gold, London 1889, diameter: 40mm.

* George Edward Frodsham, successor to Frodsham & Baker, is recorded as working in Gracechurch Street from 1869 until after 1879.

£500-600

206.

Arthur Jack, London & Cheltenham An 18ct gold hunter pocket watch, the white enamel dial having black Roman numerals, blued steel spade hands and subsidiary seconds dial, the three-quarter plate, chain fusee movement having a lever escapement with a split-bimetallic balance and signed to the backplate 'Arthur Jack, London & Cheltenham, No. 744', the hunter case hallmarked for 18ct gold, London 1876 and stamped with the casemaker's initial's 'P.W.', for Phillip Woodman, with engraved engine-turned decoration to the front and rear, diameter: 46mm.

* Arthur Jack & Co. are recorded in Cheltenham from 1865, and were still operating in the early 20th century.

* Phillip Woodman, of Benjamin Woodman & Sons, is recorded as a watch case maker working at 56, Great Sutton Street, Clerkenwell, London from before 1857.

£550-650

207.

J.W. Benson An 18ct gold half-hunter keyless pocket watch, the white enamel dial having black Roman numerals, blued steel spade hands, a subsidiary seconds dial and signed 'J.W. Benson, London', the three-quarter plate movement having a lever escapement with a split-bimetallic balance and over-coil hairspring, signed to the backplate 'J.W. Benson, Ludgate Hill, London. The Field', the half-hunter case hallmarked for 18ct gold, London 1893, with the casemaker's initial's 'J.W.B.' for Benson, diameter: 50mm.

* J.W. Benson were in business from 1844 until 1973 and are recorded as working at 62 & 64 Ludgate Hill, London with a retail outlet at West End House, 25, Old Bond Street. An advert of theirs in the Illustrated London News of the 13th of December 1884 shows a printed view of their 'Steam Room' and 'Mezanine'. They traded as J.W. Benson from 1856 until 1891 and then as a limited company.

£550-650

208.

J.W. Benson

An 18ct gold hunter keyless pocket watch, the white enamel dial having black Roman numerals, blued steel spade hands, a subsidiary seconds dial and signed 'J.W. Benson, London', the three-quarter plate movement having a lever escapement with a split-bimetallic balance, signed to the backplate 'J.W. Benson, The Keyless Ludgate Watch, Old Bond Street, London', the hunter case hallmarked for 18ct gold, London 1897, with the casemaker's initial's 'J.W.B.' for Benson, with engraved decoration to the front and rear, diameter: 50mm.

* For details of J.W. Benson see lot no. 207

£600-800

209.

Barraud & Lunds, London

An 18ct gold open-faced pocket watch, the white enamel dial having black Roman numerals, blued steel spade hands, a subsidiary seconds dial and signed 'Barraud & Lunds, London, 3/3692', the three-quarter plate movement having a lever escapement with a split-bimetallic balance, signed to the backplate 'Barraud & Lunds, 49 Cornhill, London, 3/3692', the case hallmarked for 18ct gold, London 1887 and stamped with the casemaker's initial's 'J.W', with engraved engine-turned decoration to the front and rear, diameter: 45mm.

* Barraud & Lunds are recorded as having premises at Bishopsgate Street Within, Cornhill, London from 1839 until 1863 and possibly on to 1914.

£450-550

210.

Parkinson & Frodsham

An 18ct gold hunter pocket watch, the white enamel dial having black Roman numerals, gold spade hands, a subsidiary seconds dial and signed 'Parkinson & Frodsham, London', the chain fusee movement having a lever escapement with a split-bimetallic balance and engraved backcock, signed to the backplate 'Parkinson & Frodsham, Change Alley, London, 3306', the hunter case hallmarked for 18ct gold, London 1867 and stamped with the casemaker's initial's 'W.M.W.M', for William Mansell & William Mansell, with engraved engine-turned decoration to the front and rear, diameter: 45mm.

* William Parkinson & William James Frodsham were both eminent chronometer maker's in their own right and formed a partnership with premises in both London, at 4 Change Alley, Cornhill from 1801, and Liverpool, at various addresses in Castle Street, from at least 1828. The business was continued by George Frodsham.
* William Mansell & William Mansell are recorded as working at 26, Spencer Street, Northampton Square, London from 1830.

£600-800

211.

Daniel Ross, Exeter

An 18ct gold pocket watch, the three-gold dial having blued steel spade hands, raised Roman numerals, floral decoration to the edge and engraved centre, the full-plate, chain fusee movement having a lever escapement with a plain balance, engraved backcock and signed to the backplate 'Ross, Exeter. 503',

the case hallmarked for 18ct gold, London 1840 and stamped with the casemaker's initials 'C.M', for Charles Muston, with engine-turned decoration to the rear & sides and further floral engraving to the sides, diameter: 40mm.

* Daniel Ross is recorded as a watch, clock and chronometer maker at 31, High Street, Exeter from 1837 before moving to 230, High Street in 1855 and finally Bedford Street in 1859. He was blind for the last ten years of his working life and finally sold his stock to the clockmaker Ellis in 1864. Ross supplied the clock to Blundells Old School and there is a watch signed by him in the Royal Albert Museum, Exeter.
* Charles Muston is recorded as working at 18, Red Lion Square, Clerkenwell, London from 1825.

£600-800

212.

Hyatt & Son, Wolverhampton

An 18ct gold open-faced pocket watch, the white enamel dial having black Roman numerals, blued steel spade hands, a subsidiary seconds dial and 'up & down' state of winding dial to 56 hours, the full-plate, chain fusee movement having a lever escapement with a split-bimetallic balance and signed to the backplate 'Hyatt & Son, Queen Street, Wolverhampton, 5085', the case hallmarked for 18ct gold, London 1878 and stamped with the casemaker's initial's 'J.Y', diameter: 45mm.
* John Hyatt is recorded working in Wolverhampton from 1851, as well as Wednesbury, until 1884.

£260-300

213.

Hampden Watch Co Railway Watch

A gold plated keyless open-faced pocket watch, the white enamel dial having black Arabic numerals, red outer numerals, a subsidiary seconds dial, blued steel spade hands and signed 'Hampden Watch Co.', the full-plate movement having a lever escapement with a split bi-metallic balance with over-coil hairspring, with engine-turned decoration to the backplate, signed 'The Hampton Watch Co, Canton, Ohio. New Railway, 2353489', giving a date for manufacture of 1908, the plain gold-plated case signed 'B&B Royal, 6586797', diameter: 50mm.

* The casemaker Dueber bought the Hampden Watch Company of Springfield in 1888 to get around anti-trust laws and immediately moved it to Canton where at one point the company was producing 600 watches per day with a workforce of over 1,000 employees. The company was sold in 1925 and was bankrupt within two years.

£100-140

214.

Paul Ditisheim, Geneve

A slim rolled gold keyless pocket watch, the two-tone silvered dial having black Roman numerals, a subsidiary seconds dial, blued steel spade hands and signed 'Paul Ditisheim, Geneve', the movement having a lever escapement with a split bi-metallic balance and stamped with the maker's name, with a plain 'rolled gold' case, diameter: 45mm.

* Paul Ditisheim was born in 1865 and is recorded at La Chaux-de-Fonds, Switzerland also working in Coventry for the watchmaker's Rotherham. In the early 20th century he made the world's smallest watch for the Sultan of Morocco and in 1904 was made a Chevalier of the Legion of Honour by the French Government having premises in Paris at 16, Rue d'Angers. A distinguished horologist & chronometer maker he won many awards and wrote a number of important treatise.

£250-300

215.

Thomas Russell & Son, Liverpool and London
An 18ct gold open-faced keyless chronograph, having

a white enamel dial with black Roman numerals, blued steel spade hands, an outer sweep chronograph hand and signed 'Thos. Russell, 61500', the movement having a lever escapement with a compensating balance, engraved backcock and signed 'Thos. Russell & Son, Liverpool & London, No. 61500, Makers to The Queen', the inner cuvee signed 'Made Expressly for & Sold by Frattorini & Son, Bradford', the case having engine-turned decoration to the rear and hallmarked for 18ct gold, Chester 1873, with the initial's 'T.R', for Thomas Russell, diameter: 54mm.

* Thomas Russell is first recorded at 20, Slater Street, Liverpool from 1848 before moving up the road to number 30. In 1859 the company became '& Son' and later moved to premises in Church Street becoming known for their chronometers. Their watch case manufactory was based at 30, Slater Street, Liverpool.

£1000-1200

216.

Paul Garnier, Paris

An open-faced 9ct gold keyless pocket watch, the silvered dial having black Arabic numerals, blued steel 'moon' hands, a subsidiary seconds dial and signed 'Paul Garnier, Paris', the movement having a lever escapement with a split bi-metallic compensating balance and stamped 'Swiss Made, 21 Jewels', the case stamped with the serial number '130003' and hallmarked for 9ct gold, London 1862, diameter: 44mm.

* Paul Garnier was a fine maker of clocks in the early part of the 19th Century with the business continuing after his death as both maker's and retailers.

£220-250

217.

Tisdall

An open-faced 9ct gold keyless pocket watch, the white enamel dial having black Roman numerals, blued steel spade hands, a subsidiary seconds dial and signed 'Tisdall', the movement having a lever escapement with a split bi-metallic compensating balance, the case hallmarked for 9ct gold, Birmingham 1923, with the casemaker's name & serial number 'Dennison Watch Case Co. Ltd, 266595', diameter: 42mm.

* Aaron Dennison was a founder member of the Waltham Watch Company in America who then moved to Birmingham to set up his watch case manufacturing company, casing the majority of the imported Waltham watch movements for retail in England, as well as providing cases for a number of other watchmaking concerns from the late Victorian period.

£180-220

218.

A gentleman's 18ct gold, keyless lever openface pocket watch, with circular white enamel dial with Roman numerals and subsidiary seconds dial the three quarter backplate inscribed 'patent pinion' and numbered 883536 in a plain 18ct gold case.

£400-600

219.

Waltham, a pair of gentlemen's wristwatches, both having a cushion-shaped 9ct gold case with round, white enamel dial signed 'Waltham USA', subsidiary seconds dial, blued steel spade hands and brown leather straps, one with Arabic numerals, the other with Roman numerals, both cases hallmarked for 9ct gold Birmingham 1921, and stamped with the Birmingham casemaker's initial's and name 'ALD, Dennson Watch Case Co. Ltd', with serial numbers 221693' and '221711', diameter: 30mm.

£80-120

220.

Jaeger LeCoultre. A gentleman's stainless steel and gold coloured automatic calendar alarm 'Memovox' wristwatch, the satin-finish dial with baton markers with 'bumper' winding mechanism, the movement signed and numbered K825, 1431836, the case signed and numbered 855 on inside of back and numbered 1135189 on outside and on a 'Fixoflex' bracelet.

£400-500

221.

Rotary. A lady's 9ct gold 'Rotary' wristwatch with circular white dial, baton markers and flexible bracelet in original fitted case.

£180-220

222.

A lady's diamond mounted cocktail wristwatch with rectangular dial in a case pave-set with circular diamonds and on flexible bracelet.

£450-550

223.

An 18ct gold keywound lever openface pocket watch, the circular white enamel dial with Roman numerals and subsidiary seconds dial in a guilloche case with crest.

£500-600

224.

A lady's diamond mounted cocktail wristwatch, the circular dial with Arabic numerals in an 18ct white gold and platinum case within a surround of single-cut diamonds on an expanding 'Britannic' link bracelet with small circular diamonds in millegrain collet settings.

£400-500

225.

A lady's platinum and diamond mounted cocktail wristwatch, the shaped oval dial in a rectangular case with clusters of round diamonds in the corners and on black moire strap.

£240-280

226.

Breitling. A gentleman's stainless steel 'Navitimer' wristwatch, the black dial with three subsidiary dials for seconds, minutes and hours, centre seconds with stop and reset buttons in the band and with later revolving bezel on leather strap.

£800-1000

227.

A 9ct gold bracelet of foliate decorated hollow curb linking with padlock clasp and safety chain.

£150-200



222



226

228.

A two-colour 9ct gold bracelet with padlock clasp and safety chain.

£270-300

229.

A Mexican 50 pesos dated 1821/1947 mounted within a diamond-set frame as a pendant.

£800-1000

230.

A 9ct gold graduated curb-link watch chain with gilt metal jump rings, swivel seal, three fob seals and telescopic cigarette holder in enamelled case attached.

£450-500

231.

A Continental two-colour gold bracelet of reeded pink gold and concave yellow gold linking, the clasp stamped '585', 31mm wide.

£850-1000

232.

A 9ct. gold graduated curb-link watch chain with bloodstone swivel seal attached.

£300-400

233.

A 9ct gold necklace of graduated mesh wirework linking.

£350-400

234.

An early 19th century fob seal of tapering form and with coat of arms agate intaglio, a bloodstone fob seal with lion motif, a small fob seal and a watch key seal.

£200-300

235.

A 19th century fob seal with cornelian portrait intaglio, a fob seal with lion motif and three various fob seals.

£200-250

236.

An 18ct gold and ruby mounted brooch of stylised fern spray design.

£350-450



229



231



237

237.
An early 20th century 9ct gold, amethyst and seed-pearl pendant of openwork foliate scroll design, stamped 'M.B & Co' with a French gold chain necklace.

£150-250

238.
A pair of sapphire and diamond mounted cluster earrings stamped '585'.

£120-160

239.
A late 19th century gold, sapphire and diamond mounted tremblant floral spray brooch/pendant with three stylised flower heads and intersecting leaves with circular sapphires and old brilliant-cut diamonds with chain and fitted case.

£1200-1400

240.
A 19th century gold and crystal quartz pendant cross with four faceted quartz as the cardinal points, 71mm long.

£200-300

241.
An early 20th century gold, crystal and opal bead necklace.

£350-450



239



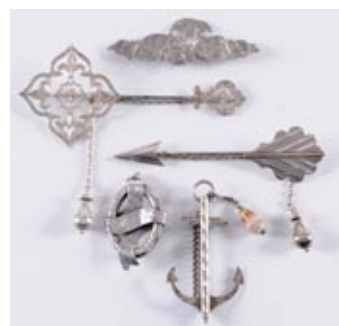
240

242.
A Scottish gold and coloured quartz rectangular brooch and a seed-pearl bar brooch with crescent motif.

£50-70

243.
A Combe-Martin silver shawl brooch with foliate pierced and engraved quatre-foil panel, secured to a steel pin with matching smaller panel by a cable-link chain with drop, 13cm long when closed, makers mark H.E for H.Ellis, Exeter 1847, also stamped 'Combmartin silver' and 'Reg Oct 21 1847 H.S.Ellis Exeter'.

£200-300



243, 244, 245, 246, 247

244.
A Combe-Martin silver shawl brooch in the form of an arrow with engraved tail feather panel, secured by a steel pin to the arrow point by a cable-link chain with drop, 12cm long when closed, stamped 'Reg Oct 21 1847 H.S.Ellis Exeter'.

£150-200

245.
A Combe-Martin silver brooch of foliate engraved design, monogrammed and stamped makers mark H.E for H.Ellis, Exeter 1847, also stamped 'Combmartin silver'.

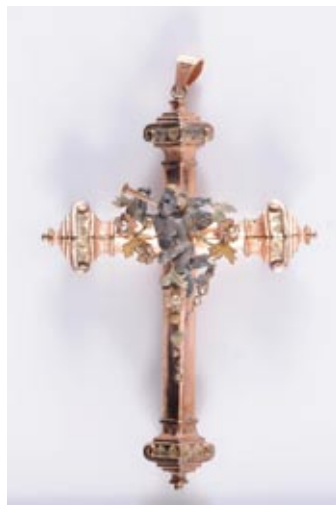
£70-90



248



249



250

246. A Combe-Martin silver oval brooch of engraved stylised ribbon design, the reverse with makers mark H & T, Exeter 1847, with applied stamp 'Reg Oct 21 1847 H.S.Ellis Exeter'.
£70-90

247. A mid 19th century silver shawl brooch in the form of a ships anchor with engraved decoration, the steel pin with clasp mechanism secured by a circular link chain with agate drop, 78mm long when closed, makers mark H & T, also stamped 'Regd 30 March 1848'
£150-200

248. A pair of late 19th century enamelled gold and seed-pearl mounted small drop earrings with fly motif.
£100-150

249. A two colour gold and ruby mounted stag motif stick-pin with cabochon ruby eye.
£100-150

250. A 19th century three-colour pendant cross with central cherub motif, 90mm long.
£150-200

251. An oval shell cameo portrait brooch depicting a young woman within an open scrollwork frame set with diamonds and seed-pearls.
£350-450

252. A pair of emerald and diamond mounted cuff-links each link with a single oval panel of pierced foliate design, millegrain-set with lines of square emeralds and rose-cut diamonds.
£350-450

253. A late 19th century gold, ruby diamond and reverse painted crystal intaglio clover leaf pendant, with three circular crystal intaglios depicting mushroom, swallow and four-leaf clover within a gold frame inset with small round rubies and rose-cut diamonds.
£350-450

254. A graduated cultured pearl single-string necklace with diamond mounted marquise-shaped clasp
£250-350



251



252



254

255.

A suite of 'Ceylon' moonstone jewellery comprising a bracelet of seven linked graduated oval stones, a single-stone ring and a pair of ear-studs, each moonstone within a 'Greek key' pattern style together with original screw earring fittings.

£600-700

256.

A pair of arts and crafts style, gold, silver and moonstone ear-studs, each with a central circular moonstone in rub-over setting within a foliate frame.

£150-200

257.

A gold and moonstone necklace of trace linking interspersed with nine graduated oval and round moonstones.

£120-180

258.

W.Essex

A mid 19th century enamel stick-pin with enamelled circular panel depicting a bulldog within a rope-twist frame, the reverse counter enamelled 'W Essex 1861'.

£300-400

259.

A set of six 19th century gold and carbuncle buttons each with a single cabochon garnet within a rope-twist surround and in fitted red leather case.

£350-450



256

260.

An Austro-Hungarian enamelled silver-gilt and gem-set pendant of openwork foliate design with putti and caryatid motifs amongst green enamelled and gem-set foliate scrollwork, suspending three freshwater pearl drops and in fitted case.

£240-280

261.

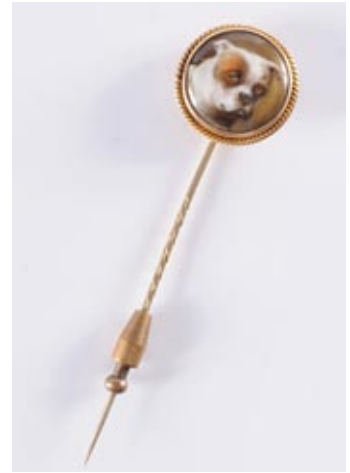
A late 19th century gold, seed pearl and turquoise mounted four swallow brooch in original leather fitted case stamped 'Depree, Raeburn & Young, Exeter.

£200-300

262.

A late 19th century Bohemian garnet mounted bracelet of eight linked circular clusters of rose-cut stones.

£300-400



258

263.

A late 19th century gold and oval shell cameo brooch, depicting the goddess Hebe attending Jupiter's eagle within a gold frame, 61mm long overall.

£250-300

264.

A 15ct gold and seed-pearl mounted cross-over hinged bangle with central foliate cluster.

£150-250

265.

A late 19th century gold and seed-pearl mounted hinged bangle with a single line of graduated split pearls between beads.

£100-150

266.

A rose diamond mounted swallow brooch, the swooping bird with outstretched wings set with rose-cut diamonds and with single ruby eye, in late 19th century style.

£400-600

267.

A late 19th century gold, silver, ruby sapphire, diamond and pearl mounted butterfly brooch/pendant with outstretched wings and detachable brooch fittings.

£600-800



267



268

268.
A pair of 18ct yellow gold and diamond mounted hoop earrings.
£200-250



269

269.
An enamelled 18ct gold bee brooch with blue and yellow enamelled abdomen and with ruby eyes.
£180-220



272

272.
A late 19th century gold and diamond mounted hinged bangle with a single row of slightly graduated round old brilliant-cut stones estimated to weigh a total of 1.5cts.
£500-800

270.
A silver and quartz crystal five stone bracelet with five graduated large rectangular clear quartz and a pair of matching drop earrings.
£70-100

271.
A silver hall-marked solid slave bangle, an amber mounted oval brooch of openwok entrelac design with single oval amber centre-stone, stamped '925', a rectangular brooch with a scene of cherubs at play, a silver charm bracelet and a stick-pin.
£80-120

273.
A late 19th century layered hardstone cameo brooch, the oval agate cameo carved depicting a classical female warrior portrait within a surround of seed-pearls and on a seed-pearl mounted bar brooch.
£300-400



272

274.
An early 20th century 15ct gold bracelet of expanding flexible gold links.
£150-200



276

275.
A 19th century gold, silver, garnet and diamond mounted heart-shaped pendant with central heart-shaped garnet within a surround of old brilliant-cut diamonds on a necklace of rope linking.
£650-750

276.
An early 20th century gold and turquoise mounted fringe necklace with slightly graduated oval turquoise suspended by knife-wires from small circular stones on a trace-link chain.
£400-500



277

277.

An early/mid 19th century two colour gold and gem-set oval 'REGARD' brooch with flowers scrolls and foliate motifs centring in a graduated row of gemstones, Ruby Emerald, Garnet, Amethyst, Ruby and Diamond, the reverse with small glazed hair compartment.

£350-450

278.

An art deco-style diamond mounted cocktail cluster ring with central graduated baguette-cut diamonds within borders of brilliant-cut stones, estimated to weigh a total of 2.0cts.

£800-1200

279.

A late 19th century gold and diamond mounted three-stone ring with round old brilliant-cut stones approximately 0.45cts, 0.55cts and 0.45cts respectively.

£700-900



280



278

280.

A 19th century gold and diamond mounted circular cluster ring with round old brilliant-cut stones estimated to weigh a total of 1.0cts, the centre diamond approximately 0.45cts, between diamond single-stone shoulders.

£500-700

281.

An early 20th century gold and diamond mounted five-stone ring with graduated round brilliant-cut diamonds estimated to weigh a total of 0.55cts in claw setting.

£250-300

282.

An 18ct white gold and diamond three-stone ring with circular brilliant-cut stones estimated to weigh a total of 0.6cts in gallery setting and a diamond mounted seven-stone half-eternity ring.

£240-280

283.

A pair of 18ct white gold and diamond mounted hoop earrings and a diamond mounted half-eternity ring channel-set with a band of princess-cut stones.

£150-200

284.

A 19th century gold, turquoise and seed-pearl mounted spiral cluster ring and a diamond and turquoise coloured glass three-stone ring.

£140-180

285.

A diamond mounted circular cluster ring with diamonds estimated to weigh a total of 0.8cts, a diamond three-stone ring and a diamond mounted rectangular plaque ring.

£350-450

286.

A platinum and diamond single-stone ring with circular brilliant-cut stone in claw setting.

£150-200

287.

A platinum and diamond mounted three-stone ring with central emerald-cut diamond approximately 0.2cts, between tapering baguette-cut diamond single-stone shoulders.

£180-220

288.

A modern 18ct gold, ruby and diamond five-stone ring with three graduated rubies and two circular diamonds in a scroll-pierced setting with diamond points.

£200-250



290

289. An 18ct gold and heart-shaped diamond single-stone ring, the 'court-shaped' band inset with a heart-shaped diamond of approximately 0.1cts.

£150-200

290. A late 19th century Scottish gold and freshwater pearl eight pointed star brooch pendant with intersecting single freshwater pearls, 58mm wide, four freshwater pearls have been replaced with simulated or cultured pearls.

£200-250

291. A gold and diamond mounted round cluster ring with central cushion-shaped old brilliant-cut stone approximately 7.4mm x 7.1mm x 2.5mm deep, within a surround of smaller round old brilliants and between diamond single-stone shoulders.

£1400-1800



291

292. A diamond mounted cluster ring with circular brilliant-cut stones estimated to weigh a total of 0.6cts in claw setting.

£300-350

293. A diamond mounted six-stone half-hoop ring with circular brilliant-cut stones in claw setting.

£250-300

294. An 18ct white gold, amethyst and diamond mounted oval cluster ring with central oval amethyst within a surround of brilliant-cut diamonds.

£250-300

295. A platinum, emerald and diamond mounted ring with single cabochon emerald, approximately 13.2mm long x 10mm wide, between diamond-set foliate shoulders and on reeded shank.

£1000-1500



294

296. A late 19th century gold and cornelian intaglio seal ring, the intaglio depicting the gold 'Mercury' in a plain rub-over setting.

£150-250

297. A diamond mounted circular cluster ring with round and cushion-shaped old brilliant-cut stones estimated to weigh a total of 0.65cts.

£240-280

298. Bunz. A platinum, synthetic sapphire and diamond mounted 'tension' ring with central circular synthetic sapphire and three graduated brilliant-cut diamonds.

£600-700

299. A sapphire and diamond mounted cluster ring in art deco style with central octagonal sapphire millegrain-set within a surround of circular diamonds.

£650-750

299A. A late 19th century gold and diamond mounted five-stone ring with graduated round old brilliant-cut stones estimated to weigh a total of 1.2cts in rhodium plated scroll-pierced setting with diamond points.

£800-1000



295



306

300.
A ruby and diamond mounted oval cluster ring with central oval ruby claw-set within a surround of circular diamonds and between baguette-cut diamond single-stone shoulders.

£700-900

301.
A late 19th century 18ct gold and diamond mounted three-row oval cluster ring pave-set with round old brilliant-cut diamonds estimated to weigh a total of 0.5cts.

£340-380

301A.
A two-colour 18ct gold and diamond mounted three-stone cross-over ring.

£150-200



308

302.
A 19th century turquoise enamelled gold and split pearl half-hoop ring and a turquoise and diamond cluster ring.

£250-300

303.
A late 19th century gold and diamond mounted five-stone half-hoop ring with graduated round old brilliant-cut stones in scroll-pierced setting.

£220-280

304.
An 18ct gold, opal and diamond mounted seven-stone ring with three oval opals separated by pairs of small round diamonds.

£140-160

305.
An 18ct gold and diamond mounted single-stone ring with circular brilliant-cut stone approximately 0.75cts in a platinum curtain claw setting and a 22ct gold wedding band.

£800-1000

306.
An 18ct white gold and diamond mounted single-stone ring with circular brilliant-cut stone approximately 6.4mm x 3.6mm estimated to weigh 1.0cts

£600-800

307.
A diamond mounted three stone ring with graduated circular stones estimated to weigh a total of 0.55cts in millegrain settings

£250-300

308.
An 18ct gold, peridot, amethyst and diamond oval cluster ring with single demi-lune amethyst and peridot within a surround of small brilliant-cut diamonds.

£200-300

309.
An 18ct gold and diamond seven stone half-eternity ring.

£120-150

310.
A sapphire and diamond mounted circular cluster ring, a diamond mounted half-eternity ring, a faceted citrine dress ring and a marcasite ring.

£200-300

311.
An 18ct white gold and diamond mounted circular cluster ring with circular brilliant-cut diamonds estimated to weigh a total of 2.0cts.

£800-1000



311



315

313. **A gold and diamond mounted single-stone ring** with round old brilliant-cut stone approximately 0.5cts in a rub-over setting.

£600-650

314. **A mid 18th century black enamelled gold and hair plait mourning ring**, the oval bezel with crystal covered hair plait, the shank dated 1763.

£150-250



316

315. **A baguette-cut diamond eternity ring** channel-set with baguette-cut stones estimated to weigh a total of 2.0cts, size O.

£1200-1400

316. **A tanzanite and diamond ring** with central oval tanzanite approximately 2.7cts in a four-claw setting between baguette-cut diamond three-stone shoulders.

£1200-1400

317. **Cartier. An 18ct white gold, black onyx and diamond mounted cross-over cluster ring**, the shank with bands of circular brilliant-cut diamonds and two central cones of black onyx, stamped 'Cartier @ BM0586 750 52', together with a certificate of purchase dated 25/02/2006 and in fitted case stamped 'Cartier'.

£2300-2700



317



318

318. **A pair of diamond mounted orchid ear-clips**, each realistically modelled bloom with petals pave-set with 'eight-cut' diamonds and with single yellow diamond (untested for natural colour) at the centre.

£1500-2000



319

319. **A pearl and diamond pendant brooch** with rose diamond-capped pearl acorn-shaped drop suspended below a ribbon bow motif within a garland of single diamonds and rose diamond clusters, together with a 'Pearl Report' Issued by Gwilym M Jones, ref 366770/4 stating that the pearl, 8.3mm diameter x 11mm is 'natural'

£1800-2200

320. **A diamond mounted two-stone cross-over ring** with rounded old brilliant-cut diamonds estimated to weigh 1.7cts and 1.6cts in claw settings.

£3500-4500



320



321

321.
A diamond mounted single-stone ring with round old brilliant-cut stone approximately 6.5mm x 4.3mm estimated to weigh 1.2cts in a curtain claw setting.
£1500-1800



322

324.
A late 19th century gold and diamond mounted double heart-shaped cluster ring with two pear-shaped old brilliant-cut stones each approximately 0.25cts, within a surround of smaller diamonds and with diamond-set ribbon bow surmount.
£1200-1500



323

322.
A ruby and diamond oval cluster ring with central oval ruby approximately 8.2mm x 6.5mm claw-set within a surround of round old brilliant-cut diamonds.
£1700-2000



324

323.
An 18ct gold and diamond mounted five-stone half eternity ring, channel-set with three princess-cut stones and two square-cut stones, estimated to weigh a total of 1.2cts.
£1200-1400

325.
A diamond mounted floral spray double clip brooch, one clip with a single flower head, the other of stylised ribbon design, pave and channel-set with brilliant and baguette-cut diamonds estimated to weigh a total of 6.0cts.
£2500-3000

326.
A sapphire and diamond mounted oval cluster ring with central oval sapphire approximately 8mm x 6mm, millegrain-set between two square sapphires and circular brilliant-cut diamonds
£1700-2000

327.
An early 19th century gold guard chain of star and matted circular links and ruby mounted textured hand-shaped clasp, 126cm long overall.
£1500-2000



325



326



327



328

328.
A diamond mounted brooch with central cushion-shaped old brilliant-cut stone approximately 1.0ct within a surround of smaller round old brilliants and five smaller clusters of round old brilliants, estimated to weigh a total of 4.0cts.

£3100-3600



329

328A.
A platinum and diamond single-stone ring with circular brilliant-cut stone approximately 10.0mm x 6.0mm estimated to weigh 3.8cts in a heart-pierced setting.

£6000-8000

329.
A late 19th century gold, silver and diamond mounted circular pendant with central round brilliant approximately 0.8cts within a surround of smaller diamond estimated to weigh a total of 1.5cts

£1200-1500



331

330.
An early 20th century sapphire and diamond mounted elliptical brooch/pendant of openwork design with central circular cluster of calibre-cut sapphires, the detachable brooch fittings subsequently soldered in place, numbered '7015'

£2500-2800

331.
An early 19th century gold link bracelet of star and matted linking and filigree-work cylindrical clasp.

£500-700

332.
A late 19th century gold, opal and diamond mounted hinged bangle with five oval opals graduated from 9mm long to 12mm long, separated by rows of round old brilliant-cut diamonds in claw setting and in fitted case.

£2000-2500



332



333

333. A late 19th century 15ct gold, opal and diamond crescent brooch with eleven graduated oval opals separated by small old brilliant-cut diamonds.

£600-800

334. An early 20th century cultured pearl and diamond pendant with central cultured pearl drop suspended within a diamond-set foliate garland and with platinum chain necklet.

£1500-2000



336

336. A platinum and diamond mounted brooch pave-set with circular and baguette-cut diamonds estimated to weigh a total of 4.0cts.

£1800-2200

337.

Cartier.

A platinum, gold diamond and seed-pearl jabot pin with stylised arrow design with open circle motif, concealed hinge and detachable arrow point, millegrain and pave-set with rose-cut and 'eight-cut' diamonds and with single seed-pearl, stamped 'Cartier Paris Londres New York', numbered '2463' and with Paris control marks, 86mm long overall.

£3500-4500

338.

An early 19th century silver and diamond foliate cluster with brooch and pendant fittings, with central round cluster within a foliate surround incorporating pear-shaped and round old brilliant-cut diamonds estimated to weigh a total of 2.2cts in foil-backed settings.

£1500-2000

339-350. No Lots.



337