

FIRST DAY'S SALE

**WEDNESDAY 13th JULY 2011**

## **WATCHES & JEWELLERY**

---

Commencing not before 12.30pm

Silver, watches and jewellery will be on view on:

Saturday 9th July 9.00am to 1.00pm

Sunday 10th July 2.00pm to 4.00pm

Monday 11th July 9.00am to 5.15pm

Tuesday 12th July 9.00am to 5.15pm

Limited viewing on sale day

*Weights and measurements are approximate guidelines only unless stated to the contrary*

### **IMPORTANT**

*Anyone wishing to view the watches and jewellery will be requested to show identification.*

### **COLOURED GEM STONES**

*Prospective buyers of coloured gemstones should be aware that some stones might have been treated to enhance their colour or clarity. Sapphires and rubies are commonly heat-treated and emeralds are commonly oiled. In the case of heat treatment, this is permanent but can affect the durability of the stones. In the case of oiling, this may need to be redone after a period of years. The international jewellery trade has generally accepted these methods. It is not possible for Bearnès, Hampton & Littlewood to obtain gemmological reports on stones offered for sale and so prospective buyers should assume all gemstones may have been enhanced by some method.*



Enquiries: Jethro Marles

Tel. 01392 413100

Email: [marlesj@bhandl.co.uk](mailto:marlesj@bhandl.co.uk)



151



151 detail



152



153

151.  
A late 18th century gold repouse pair-cased pocket watch with watch key and chain attached.

£600-800

152.  
Samuel Bishop. An 18th century silver and gilt metal pair cased pocket watch, the movement with backplate inscribed Sam'l Bishop, London no 25, the circular white enamel dial with Roman numerals in a silver case and tortoiseshell covered outer gilt metal case decorated with ferns and a butterfly.

£300-400

153.  
A gentleman's 18ct gold cased keyless lever openface pocket watch, together with two 9ct gold bolt rings, two swivels and bar.

£300-500



154

154.  
A 9ct gold graduated curb-link watch chain with attached Victorian sovereign dated '1888' together with a silver cased open face Kendal and Dent pocket watch, the dial with Roman numerals.

£700-900

155.  
A 9ct gold curb-link watch chain with attached 1/2 sovereign dated '1897' together with a 9ct gold plated open faced Waltham pocket watch, the dial with Roman numerals.  
£300-500



155



156

156.  
Allamand. A gentleman's 18ct gold cased open-face keyless lever open-face pocket watch, the circular white enamel dial with Roman numerals, subsidiary seconds dial and numbered 15620 in a plain 18ct gold case with attached curb-link watch chain.  
£1500-2000

157.

**Daniel Ross, Exeter**

**An 18ct gold open-faced pocket watch**, the three-gold dial having blued steel spade hands, raised Roman numerals, floral decoration to the edge and engraved centre, the full-plate, chain fusee movement having a lever escapement with a plain balance, engraved backcock and signed to the backplate 'Ross, Exeter. 503', the case hallmarked for 18ct gold, London 1840 and stamped with the casemaker's initials 'C.M', for Charles Muston, with engine-turned decoration to the rear & sides and further floral engraving to the sides, diameter: 40mm.

£500-600

\* Daniel Ross is recorded as a watch, clock and chronometer maker at 31, High Street, Exeter from 1837 before moving to 230, High Street in 1855 and finally Bedford Street in 1859. He was blind for the last ten years of his working life and finally sold his stock to the clockmaker Ellis in 1864. Ross supplied the clock to Blundells Old School and there is a watch signed by him in the Royal Albert Museum, Exeter.  
\* Charles Muston is recorded as working at 18, Red Lion Square, Clerkenwell, London from 1825.

158.

**Ashley & Sims, Clerkenwell**

**An 18 carat gold open-faced keyless pocket watch**, the white enamel dial having black Roman numerals, blued steel spade hands, a subsidiary seconds dial and signed 'Ashley & Sims, 2 Green Terrace, Clerkenwell', the three-quarter plate movement having a lever escapement with a split bimetallic balance and engraved backcock, the backplate signed as the dial and numbered '05489', the plain open faced case engraved to the back with the letter 'G' and hallmarked for 18 carat gold, London 1871, diameter 50mm.

£800-1000

\* Edward F. Ashley is recorded as working at 2, Green Terrace, Clerkenwell, London from before 1878 until 1913.

159.

**Waltham Vanguard, a 14 carat gold full hunter keyless pocket watch**, the white enamel dial signed 'Waltham' and having black Arabic numerals, blued steel spade hands and a subsidiary seconds dial, the movement signed and numbered 'Vanguard, Waltham, Mass, 16136234', the hunter case having engine-turned engraved decoration to the front and back and stamped 'Roy, 14K, 489101', diameter 50mm.

£600-800

160.

**Paul Garnier, Paris**

**An open-faced 9ct gold keyless pocket watch**, the silvered dial having black Arabic numerals, blued steel 'moon' hands, a subsidiary seconds dial and signed 'Paul Garnier, Paris', the movement having a lever escapement with a split bimetallic compensating balance and stamped 'Swiss Made, 21 Jewels', the case stamped with the serial number '130003' and hallmarked for 9ct gold, London 1862, diameter: 46mm.

£220-260

\* Paul Garnier was a fine maker of clocks in the early part of the 19th Century with the business continuing after his death as both makers and retailers.

161.

**A gold-filled open-faced keyless pocket watch**, the white enamel dial having black Arabic numerals, subsidiary seconds dial and blued steel moon hands, the Swiss made movement having engine-turned decoration and a lever escapement with a split bimetallic balance, the screw back case having engraved decoration to the back and stamped within 'A.E. Gold filled 1873001', diameter: 48mm.

£60-80

162.

**An 18ct gold open-faced pocket watch**, the three-colour gold dial having blued steel spade hands, raised Roman numerals, floral decoration to the edge and engine-turned engraved decoration to the centre, the three-quarter plate chain fusee movement having a lever escapement with a plain steel three-arm balance, engraved backcock and numbered to the backplate '23146', the case hallmarked for 18ct gold, Chester 1855 and stamped with the casemaker's initials 'T.R.', probably the well-known watch and clockmaker Thomas Russell of Liverpool, with engine-turned decoration to the rear & sides , diameter: 46mm.

£700-900



163

163.

**A gentleman's 18ct gold repeat pocket watch**, the circular dial with Arabic numerals and subsidiary seconds dial in a slim 18ct gold case with slide button in the band.

£1000-1500

164.

**A lady's 14ct gold cased openface fob watch.**

£100-200



165

165.

**Breguet et Fils. An early 19th century enameled gold Turkish market pair cased pocket watch**, the removable movement with dust cover inscribed 'Breguet et Fils 24412', the white enamel dial, 33mm diameter, with repeat signature contained in a polychrome enameled case with arms and lances on a red enamelled ground, the inside cover numbered 24411, the outer case similarly enameled.

£3000-3500



166

166. **Omega Seamaster, a gentleman's 18ct gold chronometer wristwatch**, the matt-gold dial having baton numerals and hands, a sweep seconds hand, day & date apertures and signed 'Omega, Officially Certified Chronometer, Seamaster', the gold back embossed with the Seamaster logo, the inside embossed with the Omega logo, mark for 18ct gold, case number '168023', giving a date of manufacture of 1968, and model number 'A88727', the Omega bracelet stamped '750' for 18ct gold, the movement stamped with the serial number '26199967' and calibre number '751' diameter: 38mm. With a red Omega box.

£2000-2500



168

167. **Raymond Weil, Parsifal, a gentleman's stainless steel automatic chronograph wristwatch**, the round black dial signed 'Raymond Weil, Geneve, Parsifal', and having three subsidiary dials, an outer chronograph seconds dial and subsidiary date aperture, the rear engraved with the serial numbers '7793, A852152', with a brown leather strap, diameter: 38mm.

£300-400

168. **A lady's platinum and diamond mounted cocktail wristwatch** the shaped rectangular dial with Arabic numerals in a case pave set with circular diamonds on a similarly set flexible bracelet with expanding flexible links.

£300-400



169

169. **Rolex. A 9ct gold 'Rolex Oyster' wristwatch**, the circular dial, 21mm diameter, with Arabic numerals and subsidiary seconds dial, signed 'Sermon Torquay' in a 9ct gold octagonal case with presentation inscription dated 1931, import marks for Glasgow 1927 and with gilt metal bracelet.

£500-700

170. **Longines. A gentleman's 18ct gold cased Longines wristwatch**, the rectangular dial with Arabic numerals and subsidiary seconds dial in a plain 18ct gold case with leather strap.

£200-300

171.

**Zenith.** A lady's 18ct gold wristwatch, the square dial with baton markers in a gold case with integral mesh-link bracelet.

£400-600

172.

**Baume and Mercier.** A lady's 18ct gold wristwatch with plain black square dial in an 18ct gold case and on leather strap.

£220-280



171



172

173.

**Rolex Prince.** A gentleman's silver cased rectangular wristwatch, signed 'Rolex' beneath the dial, the rectangular face with octagonal dial with Arabic numerals, the dial 'Rolex Prince' above a circular subsidiary seconds dial, the movement inscribed 'Rolex Hairspring, observatory quality, timed 6 positions, 72436, 15 rubies' contained in a double case with import marks for Glasgow 1930 and on black leather strap.

£4000-5000



173



174



178

174.  
**Vacheron & Constantin.**  
**A gentleman's Vacheron & Constantin wristwatch,** the circular dial with centre seconds and baton markers in an 18ct gold case stamped 'Chronometre Royal', on flexible bracelet, the clasp stamped '750'.  
 £1800-2200



180

174A.  
**A gentleman's 14ct gold, keyless lever hunting cased pocket watch,** the circular dial with Roman numerals and subsidiary seconds dial, in an engraved case.  
 £250-350

175.  
**A 9ct gold curved rectangular cigarette case** with all over engine-turned decoration 101gms all in.  
 £800-1200

176.  
**A pair of 18ct gold rectangular panel cuff-links** with regimental crest and engine-turned panels together with four 9ct gold dress studs in case.  
 £150-200

177.  
**A pair of diamond mounted single stone ear studs** each with a brilliant cut diamond approximately 0.95cts.  
 £600-800

178.  
**A late 19th century gold and turquoise mounted thimble** with star-set stones and fitted case.  
 £100-150

179.  
**A pair of gold lorgnettes** on chain.  
 £500-600

180.  
**An early 19th century 18ct gold snuff box** with all over engine-turned decoration and foliate chased clasp with internal inscription 'Thos Benson, Souvenir, 1822' and initial 'EM', maker's mark I.N, possibly for Joseph Nowill, Sheffield 1822, 85gms in a red leather fitted case.  
 £1400-1800

181.  
**A late 19th century gold mounted quartz crystal oval pendant** with fly motif.  
 £250-300



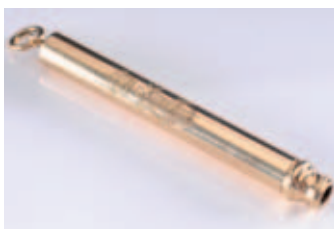
182

182.  
**A George III guinea** dated 1771.  
 £280-320

183.  
**A late 18th century gold mounted bible**, the bible (Dutch) ... Biblia Dat is De gantsche H. Schrift vervaltende alle Canonyke Bocken des Ouden en Nieuwen Testaments, cloth over wooden boards with decorative cast and gold clasps, chased with figured vignettes, boards detached, with Dutch floral endpapers, 12mo, Dordrecht, 1777.  
 £900-1300



183



184



189

184.  
**Of Royal interest.**  
**An early 20th century 9ct gold propelling pencil** engraved with 'Prince of Wales' feathers over initial 'G', in fitted red leather case stamped with 'Prince of Wales' feathers and retailers stamp 'Clark, 33 New Bond Street'  
 £200-400



185



190

185.  
**A 9ct gold charm bracelet** with sixteen attached various charms, 48gms.  
 £400-500

187.  
**A diamond and ruby mounted 'fox head' stick pin** set with rose cut diamonds and cabochon ruby eyes.  
 £150-200

189.  
**An early 20th century platinum-faced gold and diamond mounted line bar brooch** with graduated round old brilliant-cut diamonds estimated to weigh a total of 1.0ct.  
 £300-400

186.  
**A late 18th century sepia mourning panel** depicting a sorrowful young woman beside a memorial urn 'Gone but not forgotten', in a gold ring mount, subsequently converted to a brooch.  
 £140-180

188.  
**A diamond mounted 'horseshoe' bar brooch**, star set with old brilliant-cut diamonds.  
 £120-150

190.  
**A late 19th century 9ct gold, turquoise and seed-pearl mounted bracelet** of oval links.  
 £200-300



191



192



193



194

191.  
A late 19th century gold and split seed-pearl necklace with oval cluster pendant drop.  
£400-600

192.  
A late 19th century 9ct gold mesh-link bracelet of strap and buckle form with fitted case.  
£250-300



195



197

193.  
An early 19th century gold and gem-set heart-shaped 'regard' locket, the gold heart-shaped locket (heavily restored) with central round cluster and with beaded link chain necklace.  
£550-650

194.  
A pair of rose-cut diamond single-stone ear-studs, each with a round 'old Dutch' rose-cut stone, approximately 5.8mm diameter.  
£300-400

195.  
A pair of diamond mounted single-stone ear-studs each with a circular brilliant-cut stone of approximately 0.9cts in rub-over setting.  
£900-1200

196.  
A late 19th century diamond mounted twelve-point star pendant brooch set with old, brilliant cut diamonds estimated to weigh approximately 3.5cts with chain.  
£1500-2000

197.  
A platinum opal and diamond bracelet with five graduated round opals and four cushion-shaped old brilliant-cut diamonds in millegrain settings.  
£2500-2800



198



200

198.  
A diamond mounted floral spray brooch set throughout with old brilliant and rose-cut diamonds estimated to weigh a total of 1.9cts.

£600-800

199.  
A blue zircon and white sapphire line bracelet and a pair matching oval cluster ear-studs.

£80-120

200.  
A diamond mounted floral cluster bar brooch with round old brilliant and rose-cut stones estimated to weigh a total of 1.8cts, 70mm long.

£700-900



199



201

201.  
A late 19th century blue enamelled gold and single split seed-pearl mounted stick-pin.

£90-120

202.  
A suite of early 20th century Ceylonese gold, silver and sapphire jewellery comprising a necklace, a bracelet, a pair of drop earrings and a ring, composed of oval clusters, each with a central blue sapphire, claw-set within a surround of white sapphires.

£500-700



202



203



204



207



206



208

203.  
**A late 19th century gold and diamond mounted hinged bangle** with central round old brilliant-cut diamonds estimated to weigh a total of 0.9cts, between graduated rose-cut diamond shoulders.  
 £500-600

207.  
**An early 19th century gold and seed-pearl mounted hinged bangle** with central circular cluster.  
 £240-280

209.  
**A late Victorian gold hinged bangle** with applied cut-card foliate decoration.  
 £500-700

204.  
**A gold, emerald, ruby and diamond mounted bar brooch** with single emerald and two rubies separated by round old brilliant-cut diamonds in claw settings on a knife wire bar.  
 £500-600

208.  
**A diamond mounted line brooch set** with graduated circular old-cut diamonds in mill grain setting, highlighted with smaller diamonds.  
 £600-800

210.  
**A modern ruby and diamond mounted line bracelet**, the clasp stamped '750', a pair of ruby and diamond oval cluster ear-studs and an oval cluster pendant on chain.  
 £600-700

205.  
**A rose diamond mounted duck motif stick pin.**  
 £180-220

206.  
**An early 20th century gold, emerald, diamond and seed-pearl pear-shaped pendant** of pierced cage-work within a laurel wreath frame and chain.  
 £450-550



210



211

211.  
**Georg Jensen. A silver square brooch** with two birds and ear of wheat motif, 4cm wide, stamped 'Georg Jensen, 925S, Denmark, 250'.

£150-250



212

212.  
**Georg Jensen. A silver bird brooch**, 42mm wingspan, stamped 'Georg Jensen, 925S, Denmark 320'.

£120-180

213.  
**Aya. A freshwater cultured pearl and diamond pendant** with single freshwater cultured pearl approximately 15.4mm diameter, secured with a single circular brilliant-cut diamond to a 'star-fish' cap, the suspension loop stamped 'AYA' and '750' and on rope-twist chain necklace.

£250-300

214.  
**A gem-set large pendant cross** set throughout with various coloured semi-precious stones 140mm long overall, stamped '925'.

£180-220

215.  
**A green jade bead single-string necklace** with forty pale green beads each approximately 11mm diameter and with a single oval jade mounted clasp.

£300-400

216.  
**An early 20th century gold and amethyst riviere necklace** of linged graduated circular amethysts in rub-over settings, the clasp stamped 15ct.

£500-700



213



214



216



217



218



220



219



221

217.  
**A platinum-faced 18ct gold, opal and diamond mounted bar brooch** with central oval opal on a tapering bar set with circular diamonds.  
£200-250

220.  
**A modern black and white agate mounted cameo brooch**, depicting a spaniel within a plain frame stamped '750'.  
£70-90

218.  
**An amethyst and diamond mounted thistle brooch** with faceted amethyst flower between diamond-set leaves on a cross-shaped frame.  
£380-420

221.  
**A diamond mounted flower brooch**, the flower head and petals pave-set with rose cut diamonds, the single flower head inset with a circular brilliant-cut stone. 54mm long.  
£250-300



222

219.  
**A sapphire and diamond mounted floral spray brooch** with single flower head, set throughout with oval sapphires and round old brilliant-cut diamonds estimated to weigh a total of 1.9cts.  
£750-850

222.  
**A pair of rose diamond mounted floral spray ear clips**, formed from early 19th century clusters of stones in silver settings.  
£400-500



223

223.  
**A mid 19th century gold and turquoise mounted bracelet** of stamped flower head links, suspending a single drop with glazed compartment and in fitted case.  
£200-300



224



231



225



232

224.

**A 19th century gold and hair panel bracelet** composed of openwork links, each inset with a glazed lozenge-shaped hair compartment.

£400-600

225.

**A mid 19th century enamelled gold oval mourning brooch** with central hair curl and hair plait within a black and white enamel frame, the reverse inscribed A.D.C. Warner, died 18 September 1871 aged 2 3/4, together with an enamelled gold, seed-pearl and hair plait circular mourning brooch.

£200-300

226 – 230. No Lots.



233

231.

**An 18ct white gold and diamond cluster ring.**

£600-700

232.

**An opal and diamond mounted pear-shaped cluster ring** with central pear-shaped opal claw-set within a surround of brilliant-cut diamond estimated to weigh a total of 1.5cts.

£400-600

233.

**A late 19th century gold and diamond five-stone half-hoop ring** with graduated round old brilliant-cut stones estimated to weigh 1.0cts in scroll-pierced setting with diamond points.

£650-750



234

234.

**A pair of diamond mounted clip brooches**, of stylised ribbon scroll design, channel and claw-set with brilliant, single and baguette-cut stones estimated to weigh a total of 6.0cts.



235

235.

**An 18ct white gold and diamond mounted three-stone ring** with central circular brilliant-cut stone approximately 7.2mm x 4.3mm estimated to weight 1.45cts, between smaller round brilliants each approximately 0.5cts in four-claw settings.

£2800-3200



236

236.

**A late 19th century gold and diamond mounted brooch** with foliate cluster suspending a diamond-set loop with pear-shaped single-stone drop, the diamonds estimated to weigh a total of 1.8cts.

£700-1000



237



239



238



245

237.  
**A diamond and ruby mounted three stone ring**, the central ruby set between two circular, brilliant-cut diamonds, each approximately 0.8cts.

£1200-1500

238.  
**An 18ct gold, emerald and diamond cluster ring**, the central, emerald-cut emerald set within a surround of brilliant and single-cut diamonds.

£1000-1500

239.  
**A mid 19th century gold, silver and diamond mounted floral spray brooch** with single flower head buds, leaves and ribbon pave-set with old brilliant-cut diamonds estimated to weigh a total of 4.2cts

£1400-1800

240-1. No Lots.

242.  
**A diamond mounted line bracelet** with square-cut princess diamonds, estimated to weigh approximately 6cts.

£2400-2800

243-4. No Lots.

245.  
**A platinum and diamond mounted three-stone ring** with graduated circular brilliant-cut stones approximately 0.5ct, 1.0ct and 0.5ct respectively in scroll-pierced setting.

£1800-2200



242



246

246.

**A late 19th century gold and diamond mounted oval locket** with central star-set cushion old brilliant-cut diamond approximately 0.5cts within a beaded frame, suspended from a French gold fringe necklace with fringe of beaded discs with removable integral section of linking and in fitted case.

£3000-3500



247

247.

**An oval portrait miniature** depicting a young man with wavy hair within a diamond-set frame, English school, circa 1840 and leather case.

£3000-3500

248.

**Faberge.** A yellow guilloche enamelled cane handle of tapering cylindrical form with single split seed-pearl-set cap and foliate chased gold bands, struck with marks for Henrik Wigstrom, 56 standard, 45mm long, in a fitted holly wood case stamped 'Faberge'.

£3000-4000



248



248 detail



# We'll find the best value cover for the worst case scenario.

Nobody likes thinking about the worst. So think about the best instead. Because Lycetts is an independent insurance broker, we can offer you expert, impartial advice on a wealth of products and services for farm, estate, art and high value property insurance.

For further information and advice contact Simon Hay on 01392 479 111.

Exeter Office: 2 Bystock Terrace, Exeter, Devon, EX4 4HY.

Email: [simon.hay@lycetts.co.uk](mailto:simon.hay@lycetts.co.uk) or visit our website at [www.lycetts.co.uk](http://www.lycetts.co.uk)

**Lycetts**  
We know your world.